

POND



Natural Gas
Construction Turnkey
Power Delivery
Renewables
Liquefied Natural Gas
Stations & Compression
Coatings & Metallurgy
Corrosion Control
Pipeline Integrity
Mechanical Integrity
PHMSA Mega Rule
Environmental & Water Resources
ProFly Drone
Geospatial Information Systems
Technical Writing



20

OFFICES
WORLDWIDE



700+

PROFESSIONALS
READY TO SERVE



.72

PRESENT
EMR RATING



\$500M

CONSTRUCTED AND
DESIGNED ANNUALLY

PROFILE

Full-service engineering, architecture, planning, and construction management

100% in-house support for all professional services

Offices and professionals across the nation and globally



www.pondco.com

**SCAN TO VISIT
OUR WEBSITE**

CONTACT US

T: 678.336.7740

3500 Parkway Lane, Suite 500
Peachtree Corners, GA 30092

POND'S SERVICES

- Architecture
- Aviation
- Bridge Design
- Cathodic Protection
- Civil Engineering
- Construction Services
- Cost Estimating
- Environmental Services
- Facility Assessments
- Feasibility Studies
- Fire Protection
- GIS Services
- Interior Design
- Landscape Architecture
- M | E | P Engineering
- Master Planning
- POL | Fueling
- Program Management
- Public Safety
- Site Development
- Space Facilitation
- Structural Engineering
- Sustainable Design
- Transportation

DIVERSITY, EQUITY, AND INCLUSION COMMITMENT

Pond is driven by the strength of our differences. With steadfast intent, we cultivate a team that represents and connects with the communities we impact. We seek a dynamic blend of culture, background, race, gender, age, and experience because we believe diversity is our strongest asset. It leads to the creativity, empowerment, and progressive teamwork that bring our people together and sets our company apart.

Our diversity efforts begin in-house with the people who make up the family of Pond employees. They are our most important assets. We are a company that believes in our core that “Active Diversity” across generations, race, and gender contribute to the greatest results in the problems we solve. While having a company that is non-monolithic across several categories, it means nothing if we do not embrace the differences in skill, experience, and thought of the team.

While we believe diversity begins with who we recruit to join Pond, we also strive to provide people with the tools necessary to ensure they are set up for success. The same holds true for our partners and subcontractors. We have several current programs, as well as some that will be implemented soon, that ensure we are developing current and future additions to the team. Pond continues to develop partnerships to expand reach and promote Pond as an employer of choice as well as the mentor-protege program.

Pond continues their involvement in multiple associations to assist with placing women in engineering and planning positions. Recently established is an employee resource group, RENEW, whose goal is to support and develop women as they grow in their careers at Pond. Other organizations Pond is a part of are the Institute for Veterans and Military Family's Onward to Opportunity Program, as well as the Society of Hispanic Professional Engineers, where we partner with local university chapters for recruiting.

POND'S IN-HOUSE RESOURCES

DESIGN TEAM

- 19 Mechanical Design Professionals
- 11 Electrical and Controls Design Professionals
- 12 Civil Design Professionals
- 10 Structural Design Professionals
- 2 Power Transmission and Renewables
- 4 Marine | Offshore Design
- 9 PMs Construction Management and Maintenance

ASSET INTEGRITY TEAM

- 3 PhDs
- 1 AWS Senior CWI
- 6 Professional Engineers
- 6 AMPP CP Specialists
- 1 AMPP Corrosion Specialist
- 5 SSPC Protective Coating Specialist
- 3 Senior Corrosion Technologist
- 2 AMPP Internal Corrosion Technologists
- 18 API Inspectors (510, 570, 653, 1169)
- 12 ASNT Level 2+ NDT Inspectors
- 2 Guided Wave Level I Inspectors
- 3 MMT Level 1 Material Verification
- 25 AMPP Corrosion Engineers
- 20 AMPP Corrosion Technicians
- 23 AMPP Coating Inspection Staff
- 4 Full-time Pipeline Indirect Survey Crews

MORE THAN
200 EMPLOYEE
TECHNICAL
TEAM

MEET OUR LEADERSHIP TEAM



BRYAN EVANS, AMPP CP4,
API 570
Executive Vice President, Energy
Bryan.Evans@pondco.com
D: 678.336.7740 | C: 770.363.9695



BRIAN LANGMAN, MBA
Program Director, Health & Safety
Brian.Langman@pondco.com
D: 678.336.7740 | C: 404.772.7686



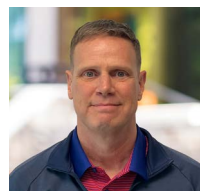
MICHAEL JEFFREYS, PMP
Senior Vice President, Energy
Mike.Jeffreys@pondco.com
D: 678.336.7740



MARCUS ANDERSON, PE
**Director of Project Management
Office (PMO)**
Marcus.Anderson@pondco.com
D: 404.748.4843 | C: 678.491.2935



ANDY LAWTON, PE
**Program Director,
Utilities Market Lead**
Andy.Lawton@pondco.com
D: 678.292.1132 | C: 256.227.4342



SHAUGH MCREYNOLDS, PE
Director of Engineering
shaugh.mcreynolds@pondco.com
D: 678.459.2495 | C: 678.613.8552

NATURAL GAS

Pond's highly trained engineers excel in concept design, detailed engineering, construction management, and asset protection. As a true multi-discipline firm with professional registrations in each state, including Puerto Rico and Guam, we are industry recognized in every aspect of terminals, facilities, and pipelines.

Pond's capabilities are enhanced by our in-house compliance management, environmental services, and construction management services. Our expertise in every aspect of design, infrastructure, integrity management, and day-to-day operations make Pond the ideal partner for your next project.

NATURAL GAS SERVICES

- Transmission and Distribution Pipelines
- Metering and Regulator Stations
- Electrical, Instrumentation, and Supervisory Control And Data Acquisition
- Environmental and Permitting
- Front End Engineering and Design (FEED) and Route Selection Studies
- Launcher and Receiver Facilities
- Real-Time MAOP and Records Documentation
- On-Site Construction Engineering and Management
- System Modeling
- Land Acquisition Management
- GPS Data Collection and GIS As-Building
- Horizontal Directional Drilling (HDD) Design
- Hydrostatic Test Plans
- Renewable Natural Gas (RNG)
- Liquefied Natural Gas (LNG)



CONSTRUCTION TURNKEY

Engineering, Procurement, Construction Management (EPCM) is the preferred project approach for many resource owners looking for a contractor to provide management services for the whole project life cycle. The EPCM model saves time and money, therefore eliminating some of the risks associated with a traditional project model that would involve multiple firms to address the various scopes of work required for an oil and gas project.

Pond's EPCM Construction Management (CM) is successful in utilizing both engineering and CM expertise to produce an energy project from feasibility through commissioning and maintenance. Pond's EPCM program for natural gas and midstream clients utilizes our national team of engineers, inspectors, planning, and CM personnel to provide a turnkey solution for our clients.

CONSTRUCTION TURNKEY SERVICES

Engineering

- Planning and Feasibility
- Engineering
- Environmental
- Jurisdictional Permitting
- Environmental Permitting
- Vendor Contracts

Construction Management

- Safety
- Inspections
- Environmental Inspections
- GIS
- Project Controls
- Commissioning
- Document Controls
- Procurement

Maintenance

- Asset Management
- Compliance
- Integrity



POWER DELIVERY

Pond's Power Delivery team has highly experienced engineers supporting industry leading solutions to meet the challenges utilities are facing today. As the new energy economy continues to change, we are committed to delivering solutions which balance cost and resiliency to help deliver safe and reliable power to your customers.

Pond has the technical expertise to offer a complete solution from feasibility studies through engineering design, procurement, construction, testing, and commissioning. Whether your focus is improving reliability and resiliency of existing systems, or integrating the latest technology and data analytics, we have the team to support your critical projects and programs.

POWER DELIVERY SERVICES

- Transmission and Distribution (T&D) Feasibility Studies
- Routing, Siting, Environmental Studies, and Permitting
- T&D Line Design and Engineering
- Substation Protection and Control
- Pole Loading Analysis/GIS Surveying
- T&D Reliability Planning, Engineering, and Asset Management
- Power Delivery Program and Project Management
- Electrical Engineering Professional Engineer Review
- Heavy Underground Design
- Backup Electric Generation Design
- Microgrid Controls System Design
- Traffic Control



RENEWABLES

Pond is dedicated to understanding energy needs and the evolution of technology, market pricing dynamics, support mechanisms, as well as regulatory and electricity demand changes to ensure the best value and energy systems. Pond has extensive experience with biodiesel, variable feedstock, and alternative fuel projects. Additionally Pond's leading edge understanding of sustainable aviation fuel (SAF) combined with our understanding of the jet fuel market, we are poised to deliver on the energy supplies of the future with forward thinking partners.

Pond is heavily involved in bio gas/renewable natural gas and waste to energy projects from siting and licensing to full design and construction support. Our team understands the siting, engineering, and regulatory challenges of clients generating power on-site. Additionally, we are fluent and experienced in the processes, agreements, permits, and interdependencies associated with transmission and distribution of renewable energy.

RENEWABLES SERVICES

- Solar Power Generation and Transmission Siting, Design, and Permitting
- Carbon Capture
- Renewable Natural Gas
- Landfill Gas to Energy
- Mass and Energy Balance
- Anaerobic Design Basis
- Feed Stock Evaluation
- Technology Evaluations
- Solar Farm Site Layout and Design
- Sustainable Aviation Fuel



LIQUEFIED NATURAL GAS

Pond has the expertise to seamlessly guide you through the intricate process of bringing Liquefied Natural Gas (LNG) projects to life. From initial concept to final execution, we are committed to delivering tailored solutions that exceed the client's expectations and drive success. Our team of seasoned LNG engineers and designers are experts in NFPA 59A site evaluations, FEED studies, and detailed design for LNG peak shaving and marine loading projects.

Whether it's facility layout, process design, safety compliance, or feasibility studies, we are dedicated to delivering top-tier expertise at every phase of the project lifecycle. Navigating the complex landscape of regulatory requirements is a crucial aspect of LNG projects. Our team is well-versed in local and international standards, ensuring that every design and engineering decision aligns with industry regulations, environmental considerations, and safety protocols, providing our clients with peace of mind throughout the project.

LNG SERVICES

- Engineering/Feasibility Studies
- FEED Packages
- Satellite LNG Plants
- Liquefaction Facilities
- Pre-treatment Facilities
- LNG Storage and Vaporization Facilities
- LNG Truck Loading/Unloading Stations
- Boil-off Compression Systems
- Plant Modifications and Upgrades
- Portable LNG Vaporizers
- LNG Facility Site Assessments
- Plant Automation, Control Systems, and SCADA
- Fire Protection Systems
- Vapor Dispersion (FLACS) and Thermal Radiation Modeling
- Code Compliance Review



STATIONS & COMPRESSION

Pond has the experience and fully in-house discipline staff to design all types of hydrocarbon stations and facilities. Our responsive planning and designs are essential to achieving the goals of today's clients, and Pond has the experience and passion to deliver. Our highly trained and specialized professionals bring a wide range of design experience across vast locations around the country, allowing our team to adapt to any project.

From small pressure regulation stations to large metering sites, Pond's in-house capabilities provide expertise and deliver solutions to any liquids, gas, or alternative bio-fuels project. Pond also possesses compressor station expertise and can assist with the unique design characteristics associated with these sites. Through traditional design, design-build, or other delivery methods that meet commercial procurement standards and requirements, Pond puts an emphasis on exceptional design, cost control, quality, and schedule.

STATIONS AND COMPRESSION SERVICES

- Gate Station Design
- Regulator Station Design
- Renewable Natural Gas (RNG) Facility Design
- Meter Sizing
- Meter Specification
- Regulator Sizing
- Regulator Specification
- Civil Site Design
- SCADA/Electrical Design
- Structural Design
- Process Flow and Piping Instrumentation Diagrams
- Packaged Unit Selection and Specification
- Cooling System Design
- Compressor Building Design



COATINGS & METALLURGY



Our team's specialized knowledge inspires innovative solutions to basic or complex issues, while ensuring the continued integrity of your facilities. Our coatings inspectors utilize experience that extends across the public and private sectors, and the industrial, commercial, and architectural industries to assure high quality services. In-house protective coatings specialists are cross-trained in coatings and corrosion technologies and are ready to provide a full-life-cycle quality management solution for corrosion protection.

The solution starts with specification development, materials selection, and cost-effective maintenance strategies. Quality is ensured through coatings inspections and highly detailed coating condition assessments. Our vast experience provides value at all stages of the project scope.

COATINGS AND METALLURGY SERVICES

- QP-5 Coatings Inspection
- Coating Specifications
- Maintenance Strategies
- Coating Condition Assessments
- Heavy Metal Testing
- Material Selection
- Failure Analysis and Investigation



COATINGS AND METALLURGY EXPERTISE

- Protective Coating Specialists (PCS)
- AMPP Certified Coating Inspectors
- AMPP Corrosion Engineers
- AMPP Corrosion Technicians
- AMPP Certified Cathodic Protection Specialists
- Licensed Metallurgical and Materials Engineers



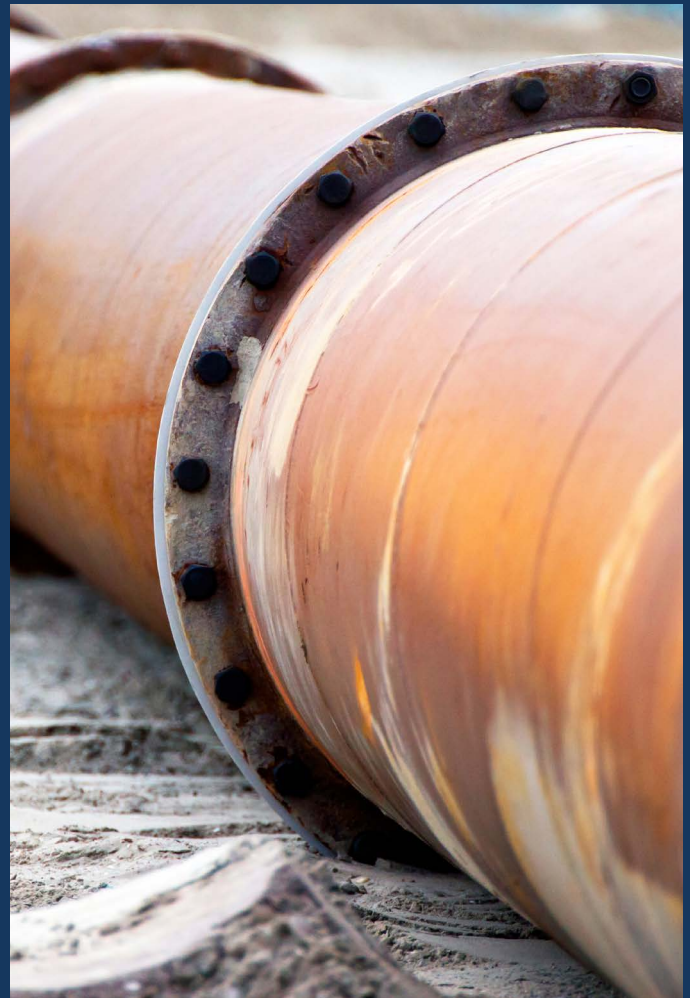
CORROSION CONTROL

Pond provides corrosion control solutions to government clients, oil marketers, pipeline and terminal operators, power generation facilities, airport fueling facilities, and gas and water utilities globally. We have inspected and analyzed cathodic protection systems on piping, tanks, and marine structures worldwide. Our services include pre-design corrosion assessments, including corrosivity analysis and AC mitigation analysis, along with system design, review of contractor submittals, self perform of CP system installs, and third-party review of data and testing procedures.

Our team brings a high level of customer service where we remain focused on regulatory and industry standards that may affect the project approach. These standards include DOT, EPA, OSHA, AMPP, API, EPRI, and IMPO.

CORROSION CONTROL SERVICES

- Cathodic Protection Design, Testing, and Installation
- AC Mitigation Design and Installation
- Pipeline Integrity Management (ECDA)
- Close Interval Survey (CIS)
- Corrosion Technician Services
- API 510/570/577/580/653/1169 Inspections
- In-Line Inspection (ILI) Turnkey Management
- Pipeline Condition Assessment
- Facility Integrity Assessments
- Risk Based Inspection (RBI) Support
- Integrity Management Programs (IMP) for DOT, PSM, and RMP Regulations



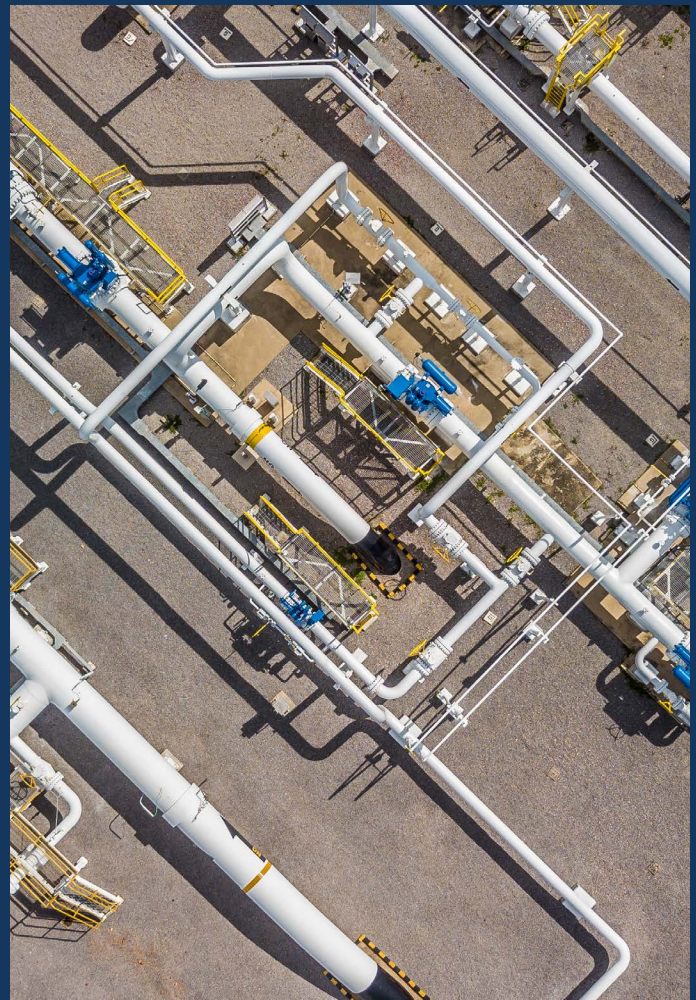
PIPELINE INTEGRITY

Pipeline integrity is a critical aspect of ensuring the safe and reliable operation of oil and gas pipelines. In compliance with regulations such as the PHMSA Mega Rule, Pond assists in implementing and executing cost-effective and comprehensive approaches that include various methodologies like In-Line Inspection (ILI), direct assessments, pressure testing, and Non-Destructive Examination (NDE) supported by a team of engineers.

These techniques allow for thorough assessments of pipeline conditions, identifying potential threats such as corrosion, deformations, cracks, and other integrity threats. Pond also provides repair recommendations to address integrity issues to maintain compliance with strict regulatory and compliance-driven requirements. By integrating these strategies into operations, pipeline operators prioritize safety, environmental protection, and the reliability of their infrastructure, thereby ensuring the continued integrity and functionality of their pipelines.

PIPELINE INTEGRITY SERVICES

- Turnkey ILI Services and Procedures
- External Corrosion Direct Assessment (ECDA)
- Repair Recommendations
- PHMSA Mega Rule Compliance
- Material Verification and MAOP Reconfirmation/ECA
- TVC Record Review
- Other RIN 1, 2, and 3 Services
- Direct Examinations
- Standard Operating Procedure (SOP) Development
- Information Management Process (IMP) Updates
- Threat Assessments
- HCA/MCA Studies
- Class Location Studies
- RMV Analysis
- NDE/NDT



MECHANICAL INTEGRITY

Pond's integrity and corrosion engineers are highly trained to identify potential damage mechanisms and apply the proper methodology to adequately characterize and evaluate an asset for continued integrity. This is especially helpful when developing inspection strategies and plans to maintain compliance and asset integrity.

Pond employs numerous integrity and corrosion engineers with specialized experience in all types of inspections and assessments over multiple industries. Pond not only inspects, but provides the client with a cradle-to-grave solution for asset integrity.

MECHANICAL INTEGRITY SERVICES

- API 510/570/653/1169 Inspections
- STI SP001 Inspections
- Certified Weld Inspection (SCWI, CWI)
- Corrosion Mapping
- Guided Wave Testing (GWT)
- Liquid Penetrant Inspection (LPI)
- Magnetic Flux Leakage Inspection (MFL)
- Magnetic Particle Inspection (MPI)
- Phase Array Ultrasonic Testing (PAUT)
- Shear Wave Ultrasonic Testing
- Ultrasonic Thickness Testing (UTT)
- 3rd Party Radiograph Review



PHMSA MEGA RULE

Pond provides full-service, cradle-to-grave compliance-driven solutions. In partnering with gas owners and operators, Pond's mission is to consult, educate, and provide services through design, integrity and risk assessments, and field services for transmission pipelines. Through the Pipeline and Hazardous Materials Safety Administration (PHMSA) and its new criteria requirements, Pond's team consults and works hand-in-hand with owners and operators to gather data focusing on safety standards and procedures.

Pond helps to mitigate risk by maintaining pipeline operations to ensure safety for the community, the environment, and nearby infrastructure. As part of Part 1, MAOP Reconfirmation, and Medium Consequence Areas (MCA) are at the forefront of PHMSA and Pond's focus.

PHMSA MEGA RULE SERVICES

Design Services

- Hydrostatic Test Designs and Plans
- Pipeline and Pig Trap Design
- Geohazard and Seismic Analysis
- Cathodic Protection Design
- Alternating Current (AC) Interference Study, Modeling, and Design

Integrity and Risk Assessments

- Due Diligence Assessments
- Risk Ranking/Modeling
- Compliance Logic for Gathering Pipelines
- Piggability Studies
- ILI Support & Data Analysis
- Pipeline Integrity Threat Assessment
- Material Verification (In-Situ and Laboratory)
- HCA and MCA Assessments
- ECDA, ICDA, SCCDA
- IMP Development, Review, and Updates
- Audit Support
- Fitness for Service
- Gap Analysis Assessments (TVC, Compliance)

Field Services

- Confirmatory and Bellhole Inspections
- Non-Destructive Examination (NDE)
- Post-Weather Event Inspections
- External Coating Assessment (DCVG and ACVG)
- Close Interval Potential Survey
- Cathodic Protection Survey
- Cathodic Protection Troubleshooting and Remediation
- Data Gathering and Integration

ENVIRONMENTAL & WATER RESOURCES

Pond's professionals have comprehensive environmental and water experience. Our firm has built a solid reputation for excellence in multiple industries, including energy, transportation, government, and the private sector. Pond's clients include major energy providers and utilities, local and state departments of transportation, the U.S. Department of Defense, the U.S. Fish and Wildlife Service, the U.S. Department of Agriculture, port authorities, airports and more.



ENVIRONMENTAL SERVICES

- Federal, State, and Local Environmental Permitting
- NEPA and State Environmental Review Documentation
- Water and Wetland Identification, Delineation, Assessment, and Mitigation Planning
- Ecological/Functional Assessment
- Stream, Wetland, and Habitat Restoration Design/Permit/Build
- Cultural Resources Study Management and Consultation
- Fisheries and Aquatic Studies
- Integrated Natural Resources Management Plans
- Natural Resources Damage Assessments
- Erosion and Sedimentation Site Assessment
- Phase 2 and 3 Design and Oversight
- Erosion, Sedimentation, and Pollution Control Plan Design
- Environmental Inspections

WATER RESOURCES SERVICES

- Watershed Planning Studies
- Water Quality Assessment and Monitoring
- FEMA Permitting and Mapping Support
- Hydraulic Structure Design - Culverts, Bridges, Dams, Intake Structures
- Inspections Assessments
- Engineering Assessments
- UAV (Aerial) and Conduit Video Inspections
- Simple to Complex Hydrologic/Hydraulic Analysis
- Breach Analysis/EAPs
- Earthen Auxiliary Spillway Erodibility Evaluations (SITES)
- Rehabilitation Design
- Design Reviews
- Design Permitting

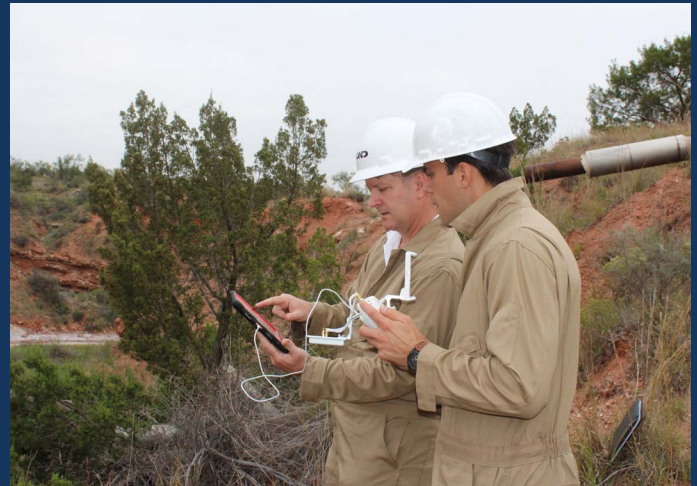
PROFLY DRONE

Pond ProFly offers advanced drone technology for efficient utility inspections, minimizing risk and cost. Our drones are adept at navigating obstacles and electromagnetic fields, enhancing safety during inspections. Pond ProFly drones use the latest Unmanned Aerial System (UAS) technology to provide safe and reliable means to collect and analyze data to support engineering assessments and inspections. Our inspectors, visual spotters, certified pilots, and coatings specialists can inspect a larger area quicker than traditional methods.

ProFly provides real-time assessments and customized data collection solutions to support unique project requirements. Additionally, our services are enhanced through the implementation of GIS data analysis and Decision-Making Tools that identify and prioritize work items and cost. We serve various industries globally, including government, oil marketers, pipeline operators, power generation, airport fueling facilities, natural gas, and water utilities. Pond ProFly elevates your projects by saving time and money while ensuring asset safety.

POND PROFLY SERVICES

- UAS Video Inspection
- High-Resolution Photography
- Aerial Mapping/Imagery
- Thermal Imagery
- GIS Data Development
- Point Cloud Acquisition
- Gas Leak Detection Capabilities
- Experts Direct and Evaluate Results
- Track Record - WatchDog™ to Map All Facilities
- UAS Sensors Allow a Safe Distance from the Surface
- Operated By Licensed FAA Pilots
- Emergency Response
- Construction Management



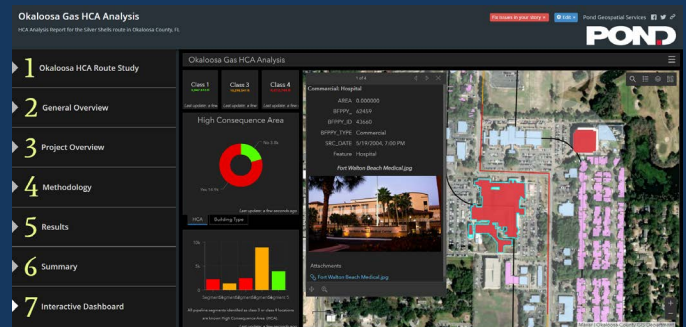
GEOSPATIAL INFORMATION SYSTEMS

Pond's multi-disciplinary group provides a full spectrum of geospatial services to achieve a firm baseline of information for planning and design initiatives. Our firm integrates the use of geographic information systems (GIS), remote sensing, and survey services to acquire and develop a foundation of vertical and horizontal infrastructure data for all projects. Pond has an impressive portfolio of geospatial projects completed for the U.S. Department of Defense.

Using both portal and web application advanced solutions, we help our clients overcome workflow and process challenges. Our team's products are standardized and incorporated into spatial analysis and stand-alone application systems to best support, grow, and visualize future client goals.

GIS SERVICES

- ESRI ArcGIS Enterprise Solutions and Applications
- ArcGIS Dashboards, Web Maps, Experience Builder, etc.
- GIS Real-Time Field Data Collection (Survey 123, Field Maps, etc.) and GPS Survey
- Data Analytics and Analysis
- Geospatial Database and Data Development
- GIS Consultation and Project Management
- High Consequence Analysis (HCA Studies)
- Land Management and Acquisitions
- Route Planning and Mapping
- Cartographic Mapping Products
- Training and Support Services



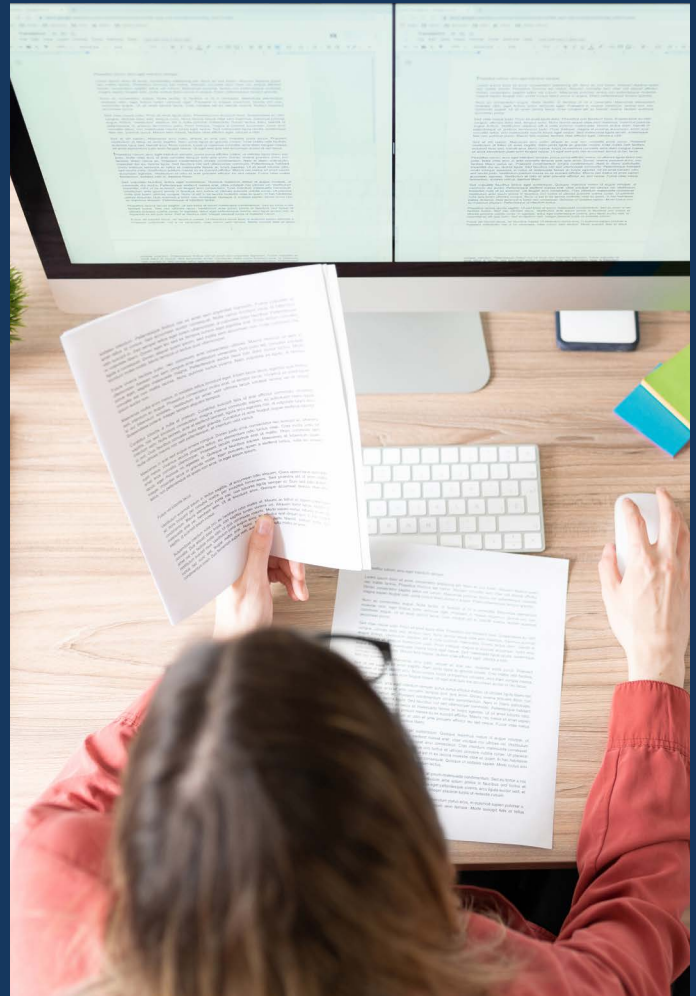
TECHNICAL WRITING

Pond is a professional organization of highly skilled technical engineering and compliance subject matter experts along with vastly accomplished professional writers. Our focus is to determine the requirements of the end-user, analyze exhibits, and craft a work product which delivers the desired outcome. We are proficient in minimizing the use of technical instruction to deliver the desired deliverable. Our focus is to curate, edit, and write documents that deliver a superior and concise message.

When needed, the use of diagrams, drawings, and other visual media may be used to help deliver a complete message. Standard indexing, formatting, and appendices are used throughout and across platforms and media. Without working in a vacuum, we gather feedback throughout the process.

TECHNICAL WRITING SERVICES

- O&M Manual Review and Editing
- Safety Manual Review and Editing
- Training Procedures Development, Review, and Editing
- CP Procedure Review and Editing
- Grant Writing



A CULTURE OF SAFETY

Pond boasts 35+ years of safely executing energy projects world-wide in a variety of hazardous environments without experiencing a single incident or accident (mishap) beyond first aid, including team subcontractors. This success is due to our proactive health and safety actions starting at the proposal phase.

On every project, the project management team, aided by internal technical health and safety resources, evaluates the entire scope of work, dividing tasks or steps following the Job Safety Analysis (JSA) or Activity Hazard Analysis (AHA) process.

0.72

PRESENT
EMR RATING

0.0

OSHA RATE OVER
THE LAST FOUR YEARS

35

YEARS WITHOUT AN
INCIDENT OR ACCIDENT

1 Million+

SAFE WORK HOURS
NATIONAL SAFETY COUNCIL



**Empowering All Employees
with Stop Work Authority**



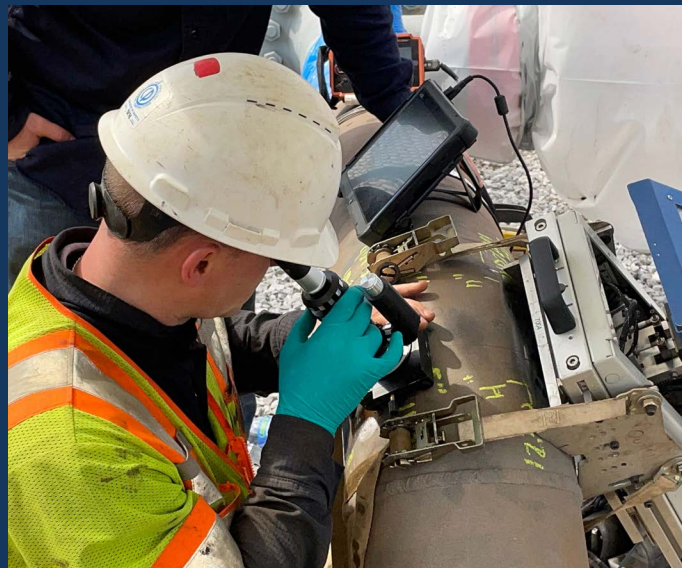
**Qualified and Competent
Person Safety Training**



**New Employee Orientation
and Short Service
Employee Program**



**Site-Specific Accident
Prevention Planning**



Colonial Pipeline
Circle of
Excellence
Safety Award



Highwire Safety
Platinum Award
2023



AGC Georgia
Safety Excellence
Award



National Safety
Council Superior
Safety
Performance Award



State of Texas
Department of Workman's
Compensation Lone Star
Safety

CONTACT US

678.336.7740 | www.pondco.com

We earn the trust that sets us apart.