

**INSPECTION TECHNOLOGIES
YOU CAN RELY**

www.transpipeintegrity.com

ABOUT TRANSPIPE

Transpipe Integrity Solutions is a leading Research and Development based company providing In-Line Inspection Technologies and solutions to the Oil and Gas pipeline industry with a plethora of different products and services.

Our Experience in Cleaning, Geometry Inspection & Deformation analysis enables us to develop, test and validate our high-resolution inspection tools developed in-house for global usage.

We work closely with global leaders in Oil & Gas Industry to identify and ensure best-in-class Asset integrity solutions with our indigenous developed tools reassuring their service life. Our affiliate companies and industry partners have vast experience, skilled manpower to deliver high value projects for various services in Pipeline pre-commissioning and manufacturing cleaning pigs.

OUR CORE VALUES

- INNOVATION
- EMPOWERMENT
- LEADERSHIP
- INTEGRITY
- SELF EXCELLENCE

CERTIFICATIONS



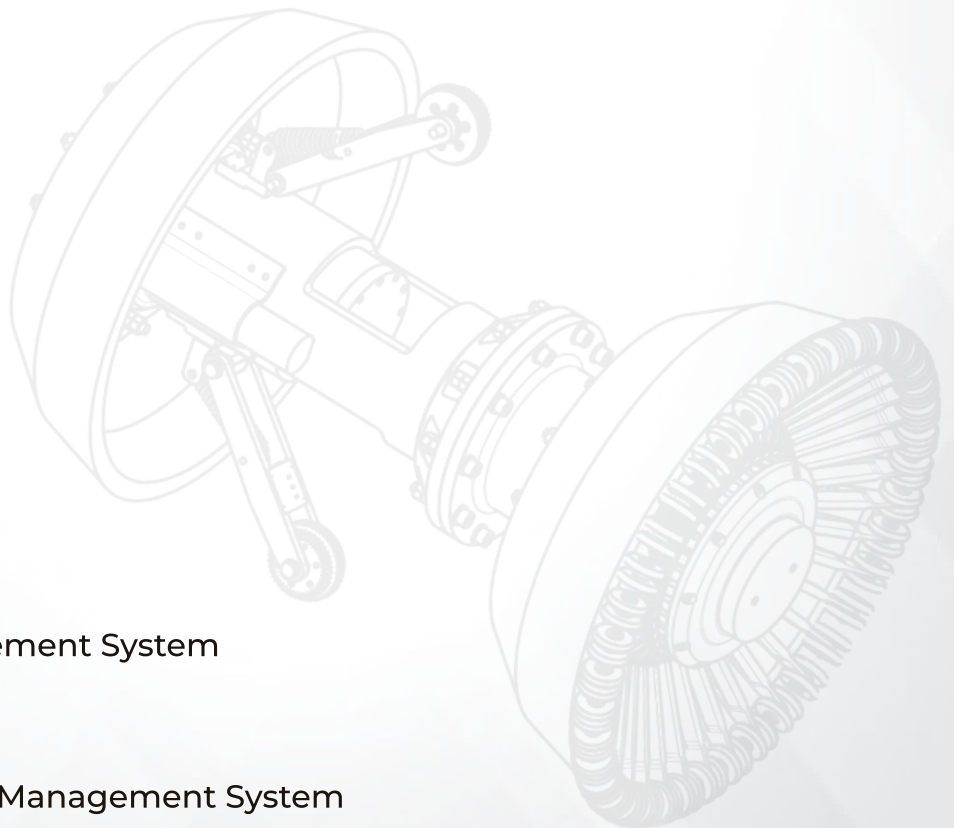
- ISO 9001 : 2015
Quality Management System



- ISO 14001 : 2015
Environmental Management System



- ISO 45001 : 2018
Occupational health And Safety Management System



IN HOUSE RESEARCH & DEVELOPMENT



TOOL DESIGN

Our team creates possible designs of each tool through In-house Software and develop a comprehensive Tool Design. It is then simulated in different environment and conditions before finalizing the design.



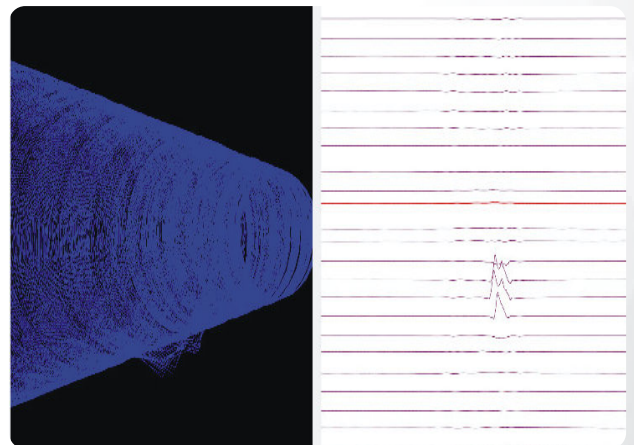
ELECTRONICS ASSEMBLY

We design and develop the Internal Electronics of tool on its own. The use of latest generation Electronics enhances tool capability in terms of detecting critical defects with accuracy.



ASSEMBLY & TESTING

Tool Assembly and testing is carried out in-house, with utmost quality and precision. The final calibration of the tool is carried out before each run to ensure successful run in the pipeline.



SOFTWARE DEVELOPMENT

Our Software "Sceptor" has been developed indigenously by Software Engineers in-house and all Data Analysis is carried out by ANSI/ASNT ILI PQ Level III and II certified personnel.

HIGH RESOLUTION - SERIES X2 - GEOMETRY TOOL

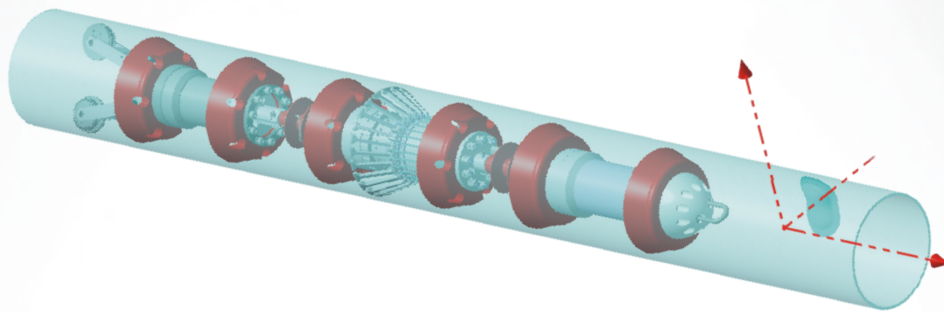
- Robust and State of Art Assembly of 6"-48" Tool Sizes.
- Multi-Channel Design covering 100% circumference of the pipeline.
- Procedure and requirements of inspections as per API 1163.
- Latest generation of Electronics used in tool resulting into faster data interpretation & quick results.



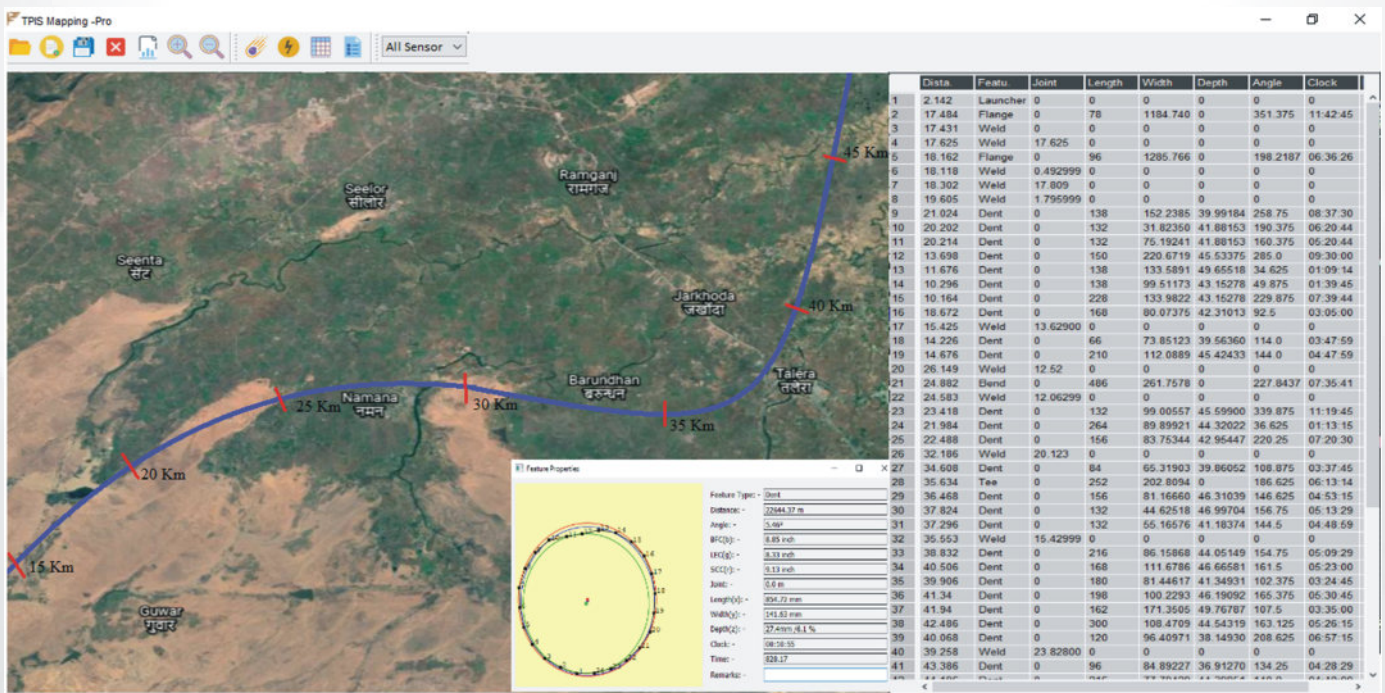
- Reporting Compliance to POF (Pipeline Operators Forum).
- Enough Battery life for longer section pipelines.
- Compatible for XYZ inspection with state of art IMU Technology.
- Unique features in the Software helping the operator to view 3D Overview of defects in pipeline.

XYZ MAPPING SERVICE

At Transpipe, we provide XYZ Mapping Service using IMU, which can be combined with our Geometry tools to provide accurate information about the Pipeline with precise accuracy specified by the operator.



An Inertia Mapping Unit (IMU) provides the actual spatial of tool movement used for this purpose. The IMU consists of accelerometer and gyroscope which provides data which can be then grafted to the X, Y and Z coordinates on a time scale basis.



Such an Inspection provides following information.

1. GPS location of the feature
2. 3D Mapping of the Pipeline
3. Understand the movement of the pipeline if any

TOOL PREPARATION & MAINTENANCE



- Transpipe workshop is well equipped for preparation & maintenance of Geometry tools.
- Each tool going to site is tested & calibrated under the supervision of QA/QC department.
- Prior to mobilization of geometry tools, final performance tests are carried to ensure functioning of each component.
- A calibration certificate for the tool is submitted to client prior to equipment mobilization to site.

Transpipe has a team of well qualified engineers, both offsite & onsite, who work closely with clients to provide the best solutions meeting their requirements.

EFFICIENT OPERATING PROCEDURES

LAUNCHING GEOMETRY TOOL



Transpipe has experienced Project Managers working round the clock to ensure the efficient Co-ordination with the Client and Internal Operations Department.

Our Field Operations Team are trained as per ASNT/ANSI ILI-PQ ensures to carry out all the checks before the tool is launched and ensure the safety before retracting the tool.

TOOL TRACKING



TOOL RECEIVING



The tool tracking is one of the important site activities which is conducted in co-operation with Client Site team.

The Geometry tool is retrieved in cordination with clients site team following all necessary HSE Procedures.



GLOBAL NETWORK

TRANSPIPE INTEGRITY SOLUTIONS ASIA

E-51, F Road, Manjusar G.I.D.C Savli,
Vadodara-391775, Gujarat, India.
☎ 0091-2667264262



TRANSPIPE INTEGRITY SOLUTIONS MIDDLE EAST AND EUROPE

JAFZA ONE, Tower A Office No.1127, Dubai, UAE.
☎ 00971(04)8170200

TRANSPIPE INTEGRITY SOLUTIONS LLC

HOUSTON, United States of America



Website: www.transpipeintegrity.com

E-Mail: Info@transpipeintegrity.com