



# ER-CON TECHNOLOGIES

*Premier Erosion Control Installations*

*Er-Con specializes in providing engineered solutions to erosion problems*



## A VARIETY OF SOLUTIONS FOR A VARIETY OF PROBLEMS

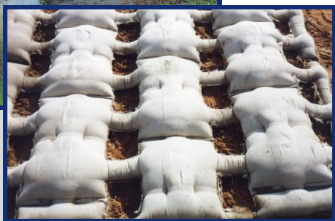
**Ercoform™ Articulating Grout Mat:**

Ercoform™ mats, when grout filled, form cable-reinforced articulating concrete block mattresses that resist erosive forces. Ercoform is our most commonly installed mattress, and protects pipelines from water-course bed degradation which predominately occurs at high flows. Mats are custom-sized for each project.



**Eco-Flex™ Articulating Grout Mat:**

Proprietary to Er-Con Technologies, Eco-Flex™ articulating mats are an environmentally friendly alternative. Similar to Ercoform™, these mats include concrete-free zones to provide space for re-vegetation while offering protection against periodic high flows.



**System 21™ Articulating Grout Mat:**

A versatile and eco-friendly approach to pipeline protection, it is designed for complete pipeline coverage within the creek bed utilizing Ercoform™ in the bed where re-vegetation is not likely, while promoting growth of local riparian vegetation within the mat along banks through open cell technology, where the surface flow-rates decrease, utilizing Eco-Flex™.



# PROTECTION FROM THE IMPACTS OF EROSION

## Designed Free-Span Pipe Supports:

Pipe supports are used as an option for structurally supporting pipelines that have encountered free-span. They are a cost-effective mechanism providing vertical support to any length of free-span encountered, supporting the weight of the pipe, absorbing shock and anchoring the pipe's position. Pipe supports are versatile and can be used in virtually all geologic locations, including sub-surface.



## Flexible Concrete Revetment (FCR):

Revetments are an effective technology that is most commonly used along banks with exceptionally steep grades and where head-cuts are quickly eroding the soils. FCR's channel the energies of the water and successfully stabilize the banks surrounding the asset. They are constructed using geo-grids in the retaining wall application and equipped with a proprietary "articulating toe" where underscour is a primary concern.

## The Palisade™ River Training System:

Palisades are a dynamic and environmentally friendly technology designed to protect assets in various water systems. The system slowly re-directs the energies of the migrating river back toward the center of the system thus protecting the asset from destructive lateral migration or other threats.



## Er-Con Technologies

7201 Fairbanks N. Houston  
Houston, Texas 77040  
Phone: 713-460-4601  
[www.er-contech.com](http://www.er-contech.com)

## Additional Technologies:

Er-Con also incorporates a number of other technologies including, but not limited to, pre-cast articulating block mats, turf reinforcement, turf matting, grid reinforcement stabilization and Geotubes®.