



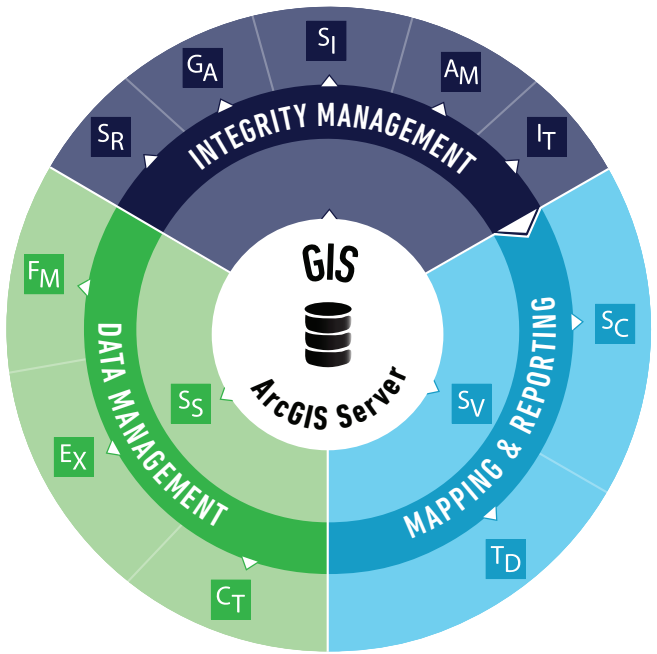
**New Century**

SOFTWARE™ by  MISTRAS

# PIPELINE INTEGRITY SUITE

WORKFLOW & DATA INTEGRATION

by  MISTRAS



New Century Software by MISTRAS provides software solutions, data management, and pipeline experience for a global network of customers in the Oil and Gas industry. These solutions help our clients manage pipeline integrity, meet regulatory compliance, and maximize safety and reliability.

New Century Software integrates seamlessly with MISTRAS' OneSource™ for Pipeline Integrity Solutions. New Century's software, coupled with Onstream's advanced Inline Inspection (ILI) capabilities, PCMS' data management, and MISTRAS' comprehensive Non-Destructive Testing (NDT) inspection toolbox, is helping to offer midstream customers an unmatched collection of integrated pipeline protection solutions.

# OVERVIEW

# CRITICAL PIPELINE LIFECYCLE SUPPORT



1

**LOAD & QC OF CRITICAL PIPELINE DATA**

2

**IMPORT & ALIGN ILI/ CIS INSPECTIONS**

3

**MANAGE INSPECTIONS & IDENTIFY ACTIONABLE ANOMALIES**

4

**INCORPORATE ILI INSPECTION & ANOMALIES INTO RISK MODEL**

5

**ASSESS P&MM'S - CREATES DIG PLAN - LOAD VERIFICATION RESULTS/ALIGNMENT SHEETS**

## LOAD & QC OF CRITICAL PIPELINE DATA

The first step towards preparing for future ILI, anomaly, and risk data processing activities.

- Centerline Design Toolkit **CT**
- Express Loader **EX**

## IMPORT & ALIGN ILI/CIS INSPECTIONS

Integrate ILI and CIS data to accurately locate and prepare for anomaly evaluation; can also align directly to pipe centerline.

- Alignment Manager **AM**

## MANAGE INSPECTIONS & IDENTIFY ACTIONABLE ANOMALIES

Fully manage ongoing inspections, along with identified actionable and non-actionable anomalies.

- InTrack **IT**

## INCORPORATE ILI INSPECTION & ANOMALIES INTO RISK MODEL

Ensure risk model includes ILI, CIS, inspection, and anomaly data to support maintenance planning activities.

- Spatial Risk Analyst **SR**

## ASSESS P&MM'S - CREATES DIG PLAN - LOAD VERIFICATION RESULTS/ALIGNMENT SHEETS

Build dig plans & P&MM activities; ensure that field verifications are securely saved.

- InTrack **IT**
- Spatial Risk Analyst **SR**
- SheetCutter **SC**

# SOFTWARE SOLUTION TOOLBOX

## DATA MANAGEMENT

**CT**

### Centerline Design Toolkit

Supports pipeline centerline creation & linear referencing tasks within Esri ArcMap.

**EX**

### Express Loader

Quickly load large amounts of data into a database.

**FM**

### Facility Manager

Manage pipeline attribute & centerline data stored in a spatially-enabled GIS.

## INTEGRITY MANAGEMENT

**GA**

### Gas HCA Analyst

Identify High Consequence Areas & class locations.

**SI**

### Spill Impact Analyst

Calculate liquid pipeline HCAs & spill volumes.

**SR**

### Spatial Risk Analyst

Perform risk assessment on oil & gas pipelines.

**AM**

### Alignment Manager

Align existing & new inspection data to a database.

**IT**

### InTrack

Streamline assessment planning and provide a quick view into scheduled assessments.

## MAPPING & REPORTING

**SC**

### SheetCutter

Generate alignment sheets in ArcGIS for pipeline mapping. (Supports ArcGIS Pipeline Referencing). View centerline information & identify changes along a pipeline.

**TD**

### TemplateDesigner

Create pipeline alignment sheet templates for ArcGIS.

**SV**

### SheetCutter Server

Automate real-time alignment sheet generation.

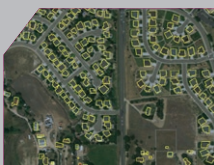




## DATA MANAGEMENT



## INTEGRITY MANAGEMENT



## MAPPING & REPORTING



## LOCATION PLATFORM

### Colorado, USA

2627 Redwing Rd., Suite 100  
Fort Collins, CO 80526  
+1 (970) 267-2000

### Texas, USA

15835 Park Ten Place, Suite 140  
Houston, TX 77084  
+1 (832) 380-2650

[www.newcenturysoftware.com](http://www.newcenturysoftware.com)

[www.ncintegrityplus.com](http://www.ncintegrityplus.com)

 **New Century**  
SOFTWARE™ by  MISTRAS

 **esri** Partner Network  
Gold

 **PODS™**  
Pipeline Open Data Standard  
[www.pods.org](http://www.pods.org)