

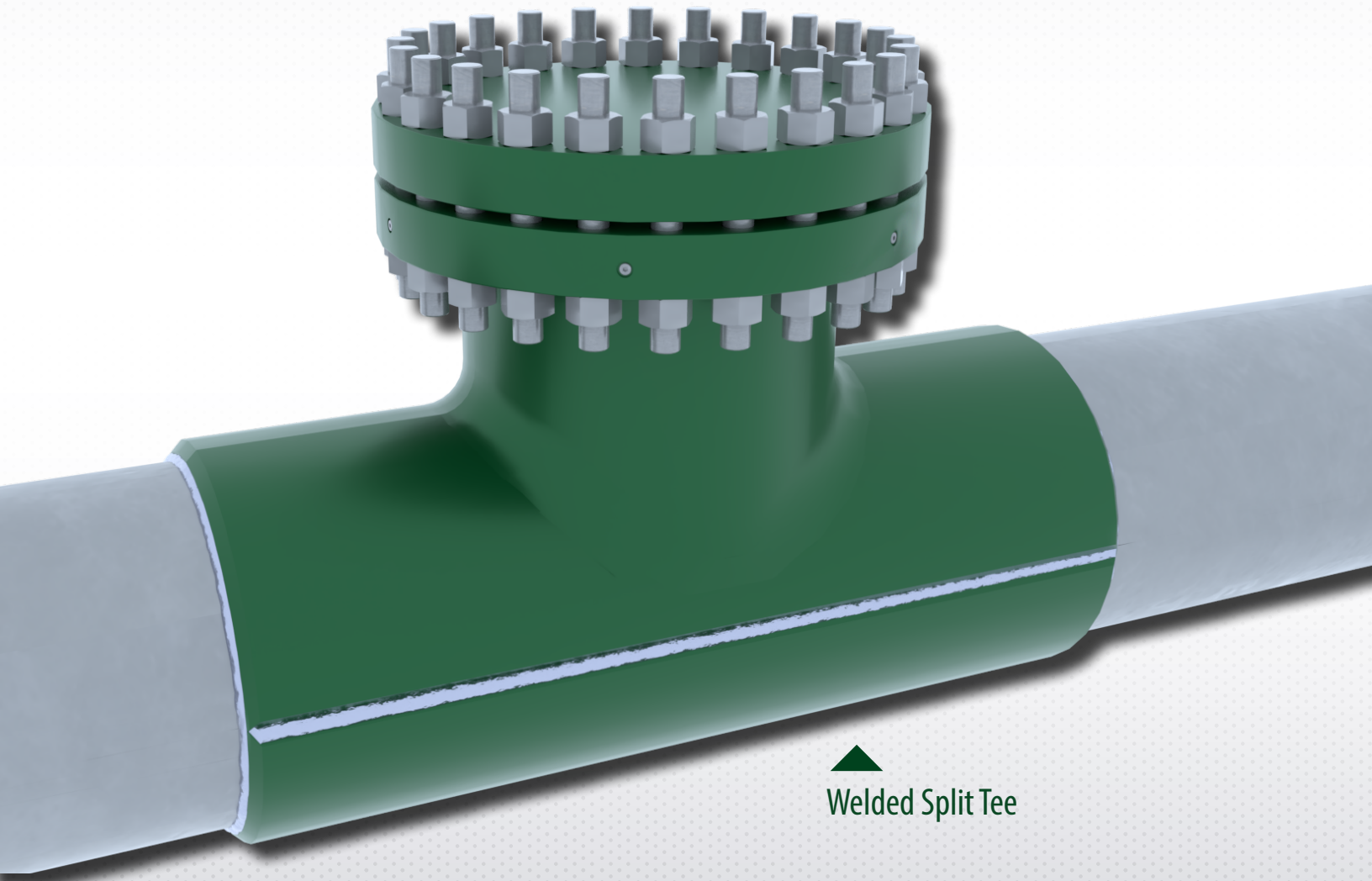


STATS GROUP

Managing Pressure, Minimizing Risk

Split Tee Fittings

1/2" - 60" Class 150-900



▲
Welded Split Tee

STATSGROUP.COM

Split Tee Fittings

1/2" - 60", Class 150-900

STATS designed and manufactured fittings can be provided on a quick turnaround to meet exact client specifications. All our fittings are interoperable with industry standard hot tap and line stop equipment.

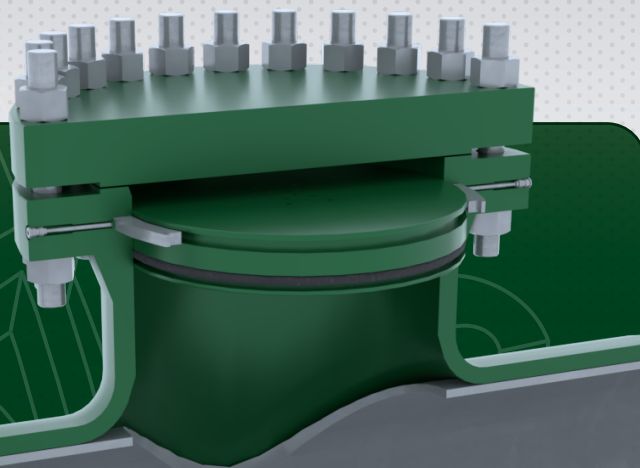
Fitting Design & Manufacture Capabilities

- ◆ ASME B31.3, ASME B31.4/8, CSA Z662 and AS-2885.1-2012
- ◆ Designed to meet client specification – philosophy to meet client spec vs client meeting STATS spec
 - Pressure / thickness and area replacement calculations
 - Code-specific material and testing requirements
 - Considerations for branch and equipment loading
- ◆ Fittings designed and manufactured locally allowing for quicker delivery turnaround; fast turnaround of fitting drawings
- ◆ STATS completion plug and flange design; interoperability with industry standard tapping and line stop equipment
- ◆ Finite element analysis (FEA) to confirm suitability of fittings for BISEP loads (ASME VIII Div 2 part 5: plastic collapse and local failure)
- ◆ In-house hydrotesting service available
- ◆ Engineered hot tap design service available
- ◆ Industry leading documentation and traceability
- ◆ Complete data books with design, MTR, weld, NDE and dimensional QA / QC information provided with every fitting
- ◆ All fittings produced and controlled within our industry leading ISO 9001 Integrated Management System program that ensures repeatable quality and consistency
- ◆ Up to 65 ksi strength fittings; 35-50 ksi typical; NACE compliance option
- ◆ 1/2" to 60" split tees, class 150# to 900#



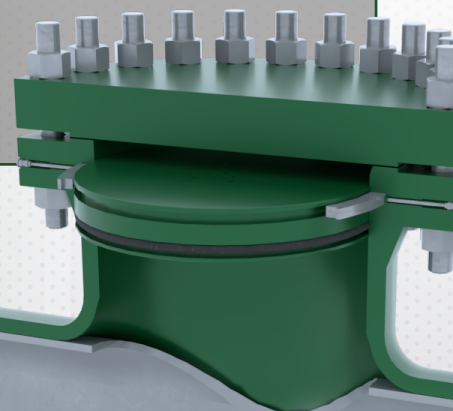
Transmission Line Stop Fittings

- ◆ 2" Vent / Purge fittings with threaded completion plug, 600#
- ◆ Split Tees 2" to 60", 600# with locking completion plug (scarfed standard)
- ◆ 4" to 30" spherical, sleeved or non-sleeve, 600#
- ◆ Top Out or Side Out Tees, custom configurations, 600#
- ◆ Structural non-pressure containing full encirclement saddles, up to 60" run, any branch size
- ◆ Regular and low temperature material options



Gas/Network Distribution Fittings

- ◆ Split Tees 2" to 36", 150# to 300#
- ◆ 1-2" Vent / Purge tees with threaded completion plugs, 150# to 300#
- ◆ 4" to 30" spherical, sleeved or non-sleeve, 150# to 300#
- ◆ Non-proprietary plug and flange interfaces for interoperability with standard tapping and line stop equipment



**ABERDEEN • ABU DHABI • DOHA • EDMONTON
HOUSTON • KUALA LUMPUR • MUSCAT • PERTH**



STATS INTERNATIONAL INC

11330 Brittmoore Park Drive
Houston, Texas 77041, USA
Tel: +1 (713) 896 3150 Fax: +1 (713) 896 3159
Email: usa@statsgroup.com

STATSGROUP.COM

