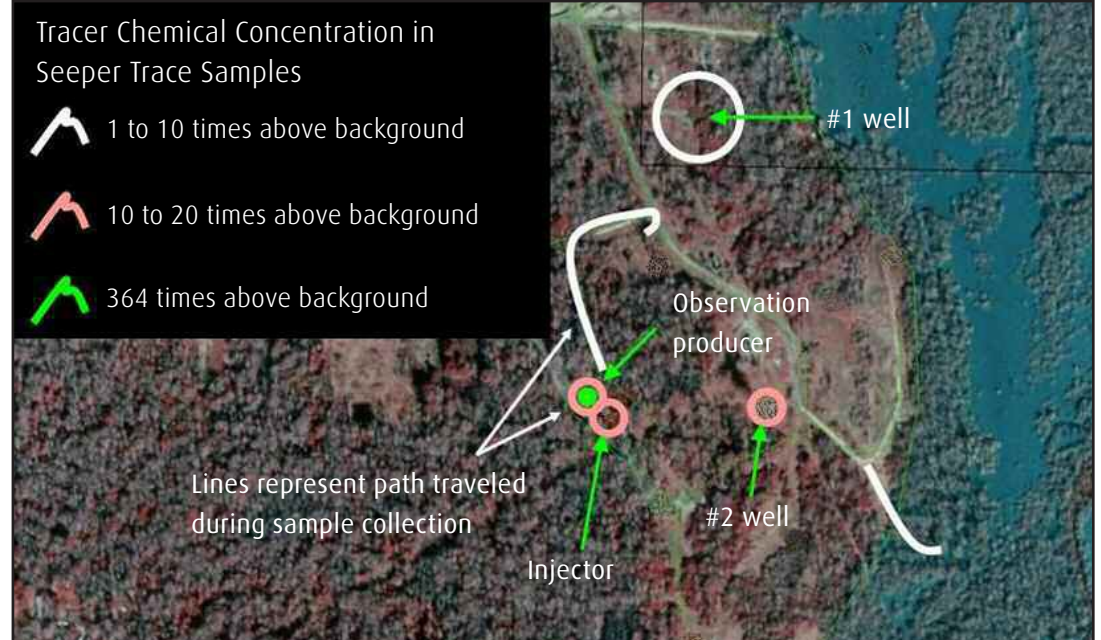




Seeper TraceSM Leak Detection Service

Seeper Trace Leak Detection for In-Situ Gas Storage, Sequestration and EOR Sites

Linde Services Inc. has developed a method that can scan a site and identify potential gas movement to the ground surface



Sequestration of Carbon Dioxide (CO₂) and Enhanced Oil Recovery (EOR)

Tracer chemicals are commonly added to CO₂ during sequestration pilot studies to monitor the movement of the CO₂. The injection breakthrough to observation wells can be determined regardless of the background concentration of CO₂, which may be present from previous EOR activities. Different breakthrough curves of the tracer in multiple observation wells help determine potential flow patterns that impact the injection of CO₂ for sequestration or oil recovery. For cases with multiple injection points, a different tracer can be put in each injection well. This will provide the ratio of contribution (percentage) of each injection well in a given production. Seeper Trace leak detection samples collected in areas of potential leakage pathways (wells or geologic anomalies) can quickly identify potential areas of movement of gas to the surface. Depth profile samples can be collected to establish the concentration gradient to positively identify if the source is above or below ground.

In-Situ Natural Gas Storage

The addition of tracer to underground natural gas storage facilities can help answer a variety of questions.

- **Identification of Faulty Wells.** If gas is detected in near-surface water wells or monitoring wells, the injection well providing the pathway to the surface can be positively identified.
- **Identification of Communication Between Strata.** If tracer chemicals are detected in strata either above or below the injection zone, the approximate area of the communication between strata may be indicated by the identity of the tracer.
- **Identification of the Injected Gas.** The tracer chemicals provide a positive means of source identification where the injection needs to be distinguished from background or existing gas in the formation.

The unique *Seeper Trace* leak detection method utilizes an active sampling device to collect representative sub-surface soil gas from the ground surface without disturbing or penetrating the ground.



An on-site laboratory capable of detecting tracers at their global ambient concentrations (parts per quadrillion range) can be used to immediately verify any detection of tracer. Also, real-time results from the on-site laboratory can be used to direct an investigation to potentially pinpoint the source of tracer chemicals and CO₂ or natural gas escaping to the air at the ground surface. This sampling method has been successfully used to detect and locate leaks from underground cross-country pipelines and underground natural gas storage facilities. It was also successfully demonstrated at the Frio, Texas sequestration site.

Leaks in pipelines can be quickly identified and located using the *Seeper Trace*SM leak detection technology. Tracer chemicals are added directly to the product in the pipeline or in water during hydrotesting. Samples are collected along the pipeline and analyzed. The detection of the tracer chemicals indicate leakage. Shorter sampling intervals allow for precise leak location.

For more information on these and other Linde Services, please call one of our Sales and Service Centers in your area.

- | | | |
|---|--|-------------------------------------|
| → Bellingham, WA (Seattle)
360-734-3955 | → Poca, WV (Charleston)
304-768-7820 | → Tucson, AZ
800-394-9929 |
| → Burlington, NJ (Philadelphia)
609-386-4466 | → LaPorte, TX (Houston)
800-824-7264 | → Tulsa, OK
918-445-5588 |
| → California 909-476-8527 | → Salt Lake City, UT
801-973-8003 | Canada Sales and Service
Centers |
| → Gonzales, LA (Baton Rouge)
225-647-9797 | → Sandusky, OH (Cleveland)
419-621-5512 | |
| → Griffith, IN (Chicago)
219-923-0222 | | → Edmonton, Alberta
780-467-9000 |
| | | → Sarnia, Ontario
519-332-0730 |

Linde
10 Riverview Drive
Danbury, CT 06810
Phone 1.844.44LINDE (1.844.445.4633), Fax 1.800.772.9985; 716.879.2040
www.linde.com

The Linde logo and the Linde wordmark are trademarks or registered trademarks of Linde plc or its affiliates. The information contained herein is offered for use by technically qualified personnel at their discretion and risk without warranty of any kind.

Copyright © 2020, Linde plc. 9/2020 P-40-4664