

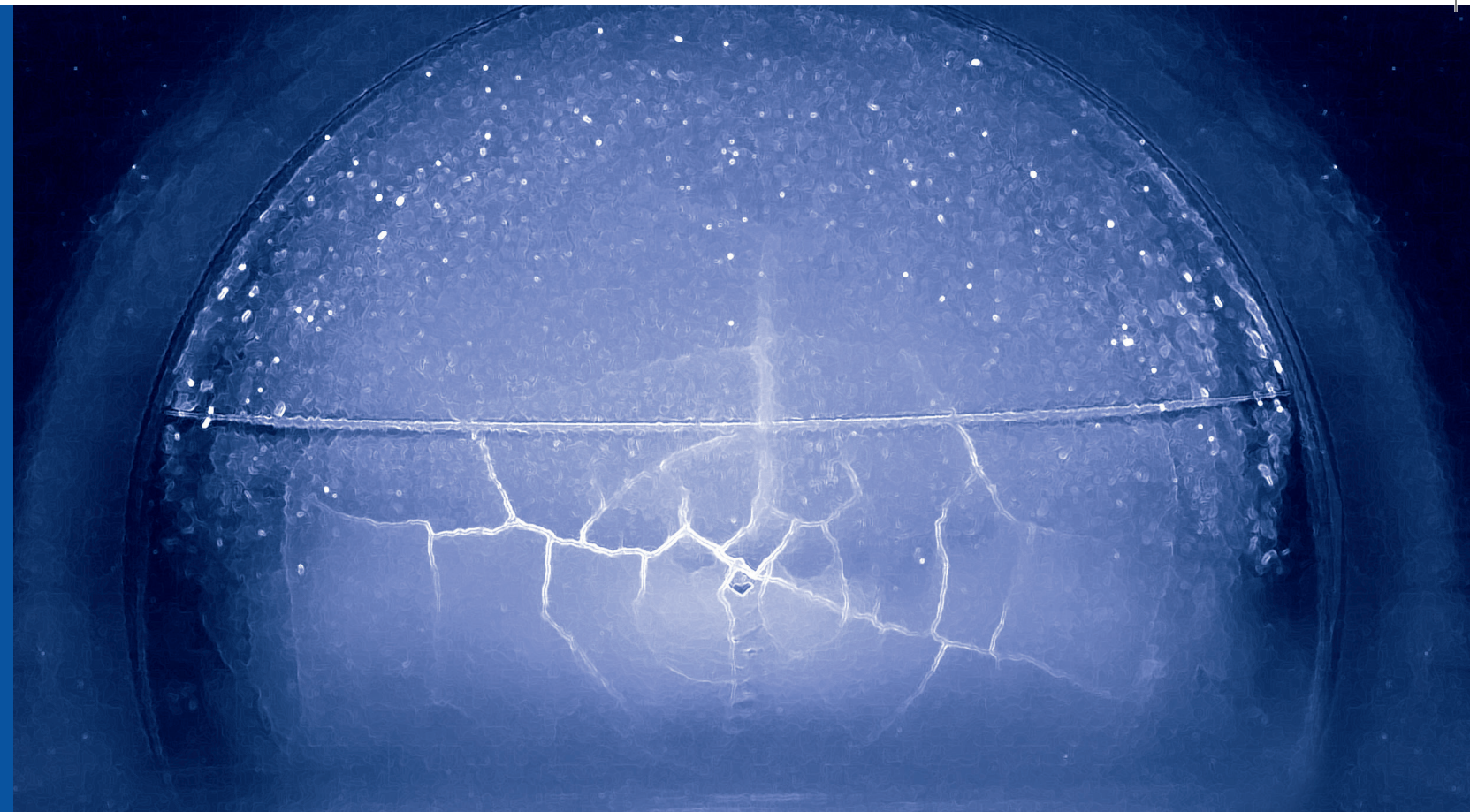
## INDUSTRIES

- Pipelines
- Refineries
- Hospitals
- Commercial Buildings
- Chemical Plants
- Hotels
- Paper Mills
- Water and Waste Water Treatment Plants
- Breweries
- Nuclear and Fossil Fuel Power Plants
- Ships



## PIPE VARIETY

- 0.5 in-42 in Diameter
- Carbon Steel
- Stainless Steel
- Brass
- Copper
- Cast Iron
- Aluminum
- Fiberglass
- Horizontal
- Transite
- Vertical
- Out of Round
- Internally or Externally Coated
- Cement Lined



### AMARILLO, TEXAS

806-371-8854  
Fax: 806-371-8856

### PERRYTON, TEXAS

806-435-7644  
Fax: 806-435-7164

### CHANNELVIEW, TEXAS

281-452-1800  
Fax: 281-457-6641

### MUNITH, MICHIGAN

517-596-2629  
Fax: 517-596-3172



[www.freezetechnology.com](http://www.freezetechnology.com)



EMERGENCY RESPONSE 24 HOURS A DAY THROUGHOUT THE UNITED STATES

THE PIPE FREEZING SPECIALISTS



**AN INDUSTRY LEADER AND INNOVATOR PROVIDING TURN-KEY FREEZING SOLUTIONS FOR MULTIPLE INDUSTRIES FOR OVER 50 YEARS**

**PIPELINE MAINTENANCE**

For pipeline maintenance, our customers frequently use the ICE-O-LATOR® System to isolate piping systems, valves, damaged pipes and road/river crossings. Our technology is unparalleled in today's industry and has proven to be effective under the most demanding situations.

**LEAK DETECTION**

The ICE-O-LATOR® System is the most efficient way to locate leaks in a pipeline. We can isolate the leaks quickly and reliably without cutting or welding the line. Once the leak is located, freeze plugs are used to isolate the defective section, and again, costly draining and refilling of the pipeline is eliminated.

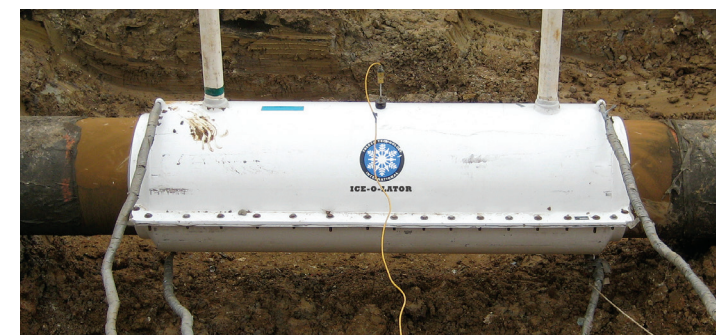
**HYDROSTATIC TESTING**

Several industries have adopted elaborate hydrostatic testing and rehabilitation programs to continually certify the integrity of their pipelines. To serve these companies, Freeze Technology's ICE-O-LATOR® System is used to rapidly freeze a plug within a pipeline in lieu of installing test manifolds. Water can be moved from one test section to another, eliminating costly draining and refilling.

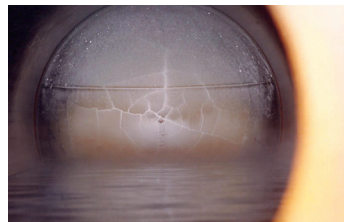


**ICE-O-LATOR®**

Through use of the ICE-O-LATOR® System, any section of pipe may be isolated for hydrostatic testing, modification, or leak location without damage to the pipe. The controlled development of an ice plug eliminates the need for installation of test headers or temporary manifolds.



Our ICE-O-LATOR® equipment has been developed and patented as the most efficient means for freeze plugging a pipe. As a result of 50 plus years of research and experience, Freeze Tech is able to offer unmatched expertise and is considered the pioneer in freeze plugging technology.



Our specialized equipment is designed to serve all industries. So, whether your project is on a pipeline right-of-way or at the top of a commercial building, we can meet the demands of your working environment.



Freeze Tech maintains its own fleet of liquid nitrogen tankers and portable tanks located at strategic points throughout the United States.



Freeze Tech has served the nuclear industry for decades. Our nuclear qualified technicians are background checked, stay current in General Rad Worker Training, and are routinely badged for unescorted access in many facilities. Our patented ICE-O-LATOR® equipment is designed for rapid installation and remote operation, thereby reducing exposure and contamination to personnel and equipment.

[www.freezetechnology.com](http://www.freezetechnology.com)



**SAFETY PROGRAM**

- Full-time Safety Director
- New Hire Safety Orientation with written exam
- In-house Safety Training
- Safety Training Matrix
- Employee ID/Certification Cards
- Inexperienced/New Employee Identification
- Employee Disciplinary Program
- Mandatory PPE Furnished by the Company
- Drug and Alcohol Screening
  - Preemployment, Random, Annual, Reasonable Cause, Post Accident, DOT
- Pre-job Safety Orientation
- Daily Safety Meetings at Job Site
- Daily Job Safety Analysis (JSA)
- Job Specific Safety Plans
- Daily Supervisor Job Site Inspections
- Safety Audits

**QUALIFIED TECHNICIANS**

- Class A CDL, HAZMAT, Tanker Endorsements
- Confined Space, Supplied Air Respirator Trained, FIT Test
- Competent Person Excavation
- CPR First Aid

