

Pipeline Surveyor Family

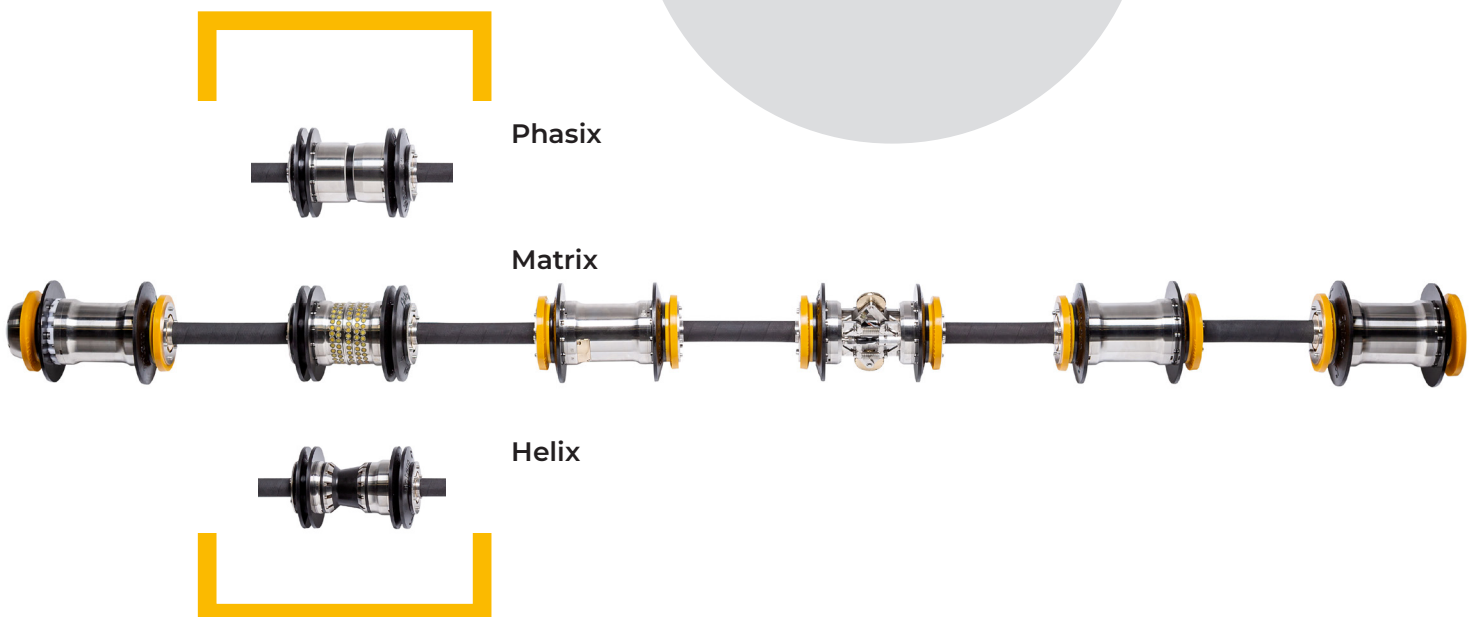
Introducing the next evolution in pipeline inspection technology: the Pipeline Surveyor Family. Engineered with innovation at its core, this new UT inspection tool combines versatility with durability, encased in a tough jacket to withstand the most challenging pipeline environments. With a mechanical ruggedized redesign enhancing reliability, and an electronic overhaul facilitating seamless operator interaction and diagnostics, the Pipeline Surveyor Family sets a new standard in efficiency and ease of use.

Equipped with advanced software meticulously crafted to prevent operator errors and streamline optimization, and featuring a modular redesign enabling the utilization of various sensor heads within a single tool, this family of inspection tools redefines what's possible in pipeline inspection technology.



Key Features

- Versatile Durability
- Enhanced Reliability
- Seamless Interaction
- Streamlined Optimization

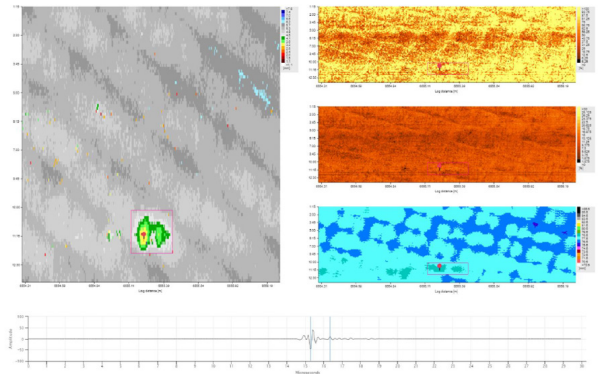


Operational Benefits

Unlock the operational power of Pipeline Surveyors, redefining pipeline inspections with precision and efficiency. Fast Matrix tools enable inspections during product flow or batching, minimizing downtime. Ultra High-resolution tools offer detailed insight into challenging pipelines, facilitating proactive maintenance.



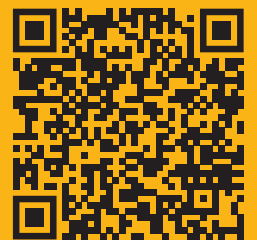
A common backbone ensures a flexible fleet of tools, available worldwide at short notice. Built on a ruggedized platform, these tools guarantee success even in the toughest pipelines. Swift fiber data transfer delivers inspection results promptly for rapid decision-making. Each tool provides ILI, GEO, and XYZ surveys simultaneously, enhancing assessment depth. Experience the future of pipeline inspections with Pipeline Surveyors.



Reporting

During our inspection with the Pipeline Surveyors we can provide you online and onsite inspection data. The final data analysis and reporting will be delivered in a few weeks after. Along with the data we can provide our pipeline data management platform (PRIMS) and integrity assessment services (defect and fit for purpose assessment).

Get to know the Game-Changer in Pipeline Inspection **Pipeline Surveyor Phasix**



Learn more and
contact our
experts