



ADVANCED
DRY SUCTION
EXCAVATION
TECHNOLOGY

MTS **DINO**
SERIES

**BUILT FOR DRY.
BUILT TO
WORK.**



MTS **DINO** SERIES

**DIG SAFE. DIG DRY.
DUMP ON SITE. STAY ON SITE.**



- 1. 3-STAGE MATERIAL SEPARATION SYSTEM**
- 2. MTS MULTIPLE STAGE FAN TECHNOLOGY WITH 24,000 CFM TWIN FAN SYSTEM**
- 3. HIGH CAPACITY ON-BOARD COMPRESSOR, RATED TO 360 CFM @ 185 PSI**
- 4. HYDROSTATIC GROUND DRIVE**

The innovative MTS Dino Series suction excavator is purpose-built for dry, from the ground up, to powerfully and safely excavate without the use of water.

Utilizing patented technology and the highest quality components, each unit is engineered and manufactured specifically to optimize performance and throughput. Spend less time in the shop and more time working.

No leaving the jobsite to refill or dump wet spoils. No costly slurry disposal charges. No overweight loads. Minimizing your travel and reusing excavated material effectively reduces your carbon footprint.

Unrivaled productivity. Decreased costs. Uncompromising safety. Environmentally responsible.



5. AUTOMATIC "JET-PULSE" FILTRATION SYSTEM FOR INCREASED EFFICIENCY

6. ALL CLEAR 'IKE' EXCAVATION SYSTEM

7. 10" DIAMETER SUCTION HOSE

8. HYDRAULICALLY CONTROLLED POWER ARM

* Features listed do not apply to all truck configurations.

MTS **DINO4.5 LT**

The MTS Dino 4.5 LT includes the very features that set the Dino Series of suction excavators apart and is ready to get to work out of the gate. This unit combines over 20 years of proven engineering with the on-site experience of North American vacuum excavation operators.



TRUCK DIMENSIONS
32 x 8 x 12 ft



CONTAINER VOLUME
6 yds³ (4.5 m³)



VACUUM SYSTEM
24,000 CFM Patented
Multi Stage Technology



HYDROSTATIC DRIVE
Not equipped



FILTRATION SYSTEM
Automatic Self Cleaning
System



SUCTION HOSE
10" Diameter



CHASSIS
Class 8 Vocational



AIR COMPRESSOR
360 cfm @ 185 psi



SUCTION HOSE CARRIER
Power Arm



MTS **DINO**4.5

Equipped with many of the standard features included on each MTS Dino Series, the 4.5 also includes the premium option for the hose carrier with the Mega Arm, as well as the time-saving efficiency of the hydrostatic ground drive. These advanced options add to the overall performance of an already high-performing suction excavator.



TRUCK DIMENSIONS
32 x 8 x 12 ft



CONTAINER VOLUME
6 yds³ (4.5 m³)



VACUUM SYSTEM
24,000 CFM Patented
Multi Stage Technology



HYDROSTATIC DRIVE
Wireless Remote Control



FILTRATION SYSTEM
Automatic Self Cleaning
System



SUCTION HOSE
10" Diameter



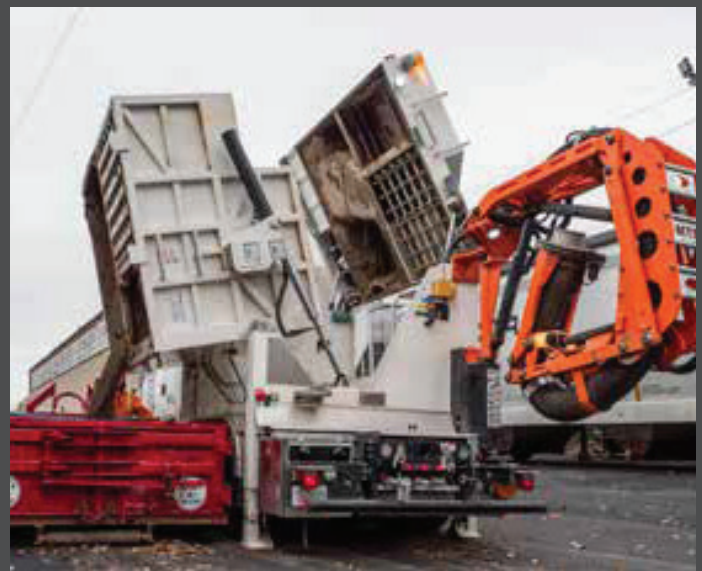
CHASSIS
Class 8 Vocational



AIR COMPRESSOR
360 cfm @185 psi



SUCTION HOSE CARRIER
Mega Arm








CUSTOM BUILDS

MTS **DINO6**

-  **TRUCK DIMENSIONS**
34 x 8 x 12 ft
-  **CONTAINER VOLUME**
8 yds³ (6 m³)
-  **HYDROSTATIC DRIVE**
Wireless Remote Control
-  **FILTRATION SYSTEM**
Automatic Self Cleaning System
-  **CHASSIS**
Class 8 Vocational
-  **AIR COMPRESSOR**
360 cfm @185 psi
-  **VACUUM SYSTEM**
24,000 CFM Patented Multi Stage Technology
-  **SUCTION HOSE**
10" Diameter
-  **SUCTION HOSE CARRIER**
Mega Arm



MTS **DINO8**

-  **TRUCK DIMENSIONS**
36 x 8 x 12 ft
-  **CONTAINER VOLUME**
10.5 yds³ (8 m³)
-  **HYDROSTATIC DRIVE**
Wireless Remote Control
-  **FILTRATION SYSTEM**
Automatic Self Cleaning System
-  **CHASSIS**
Class 8 Vocational
-  **AIR COMPRESSOR**
360 cfm @185 psi
-  **VACUUM SYSTEM**
24,000 CFM Patented Multi Stage Technology
-  **SUCTION HOSE**
10" Diameter
-  **SUCTION HOSE CARRIER**
Mega Arm



MTS **DINO12**

-  **TRUCK DIMENSIONS**
36 x 8 x 12 ft
-  **CONTAINER VOLUME**
16 yds³ (12 m³)
-  **HYDROSTATIC DRIVE**
Wireless Remote Control
-  **FILTRATION SYSTEM**
Automatic Self Cleaning System
-  **CHASSIS**
Class 8 Vocational
-  **AIR COMPRESSOR**
360 cfm @185 psi
-  **VACUUM SYSTEM**
24,000 CFM Patented Multi Stage Technology
-  **SUCTION HOSE**
10" Diameter
-  **SUCTION HOSE CARRIER**
Mega Arm



ENGINEERED FOR DRY, LEAVING THE COMPETITION BEHIND!

There are many different kinds of excavation equipment on the market that can all generally carry out the same task and get the job done. But when it comes to environmentally responsible, safe, non-destructive, dry digging - the MTS Dino Series Suction Excavator from Ox Equipment has a clear advantage over any other equipment out there.

Being engineered for excavating dry materials means that the entire workflow of the MTS Dino Series, from the high-quality tool options, to the filtration system, to dumping, and even the maintenance of this equipment, was all carefully considered during the manufacturing process. With down-time mitigated through this advanced technology, the MTS Dino Series will still be working on the job site while the majority of the competition is at the disposal facility, water refill station, or at shop getting repaired.

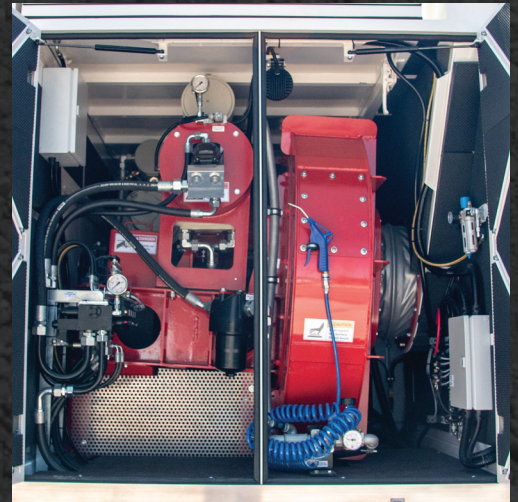


BUILT FOR DRY.

MULTIPLE STAGE TWIN FAN TECHNOLOGY

The Dino Series Suction Excavator is engineered around the MTS high-performance twin fan system and delivers an industry-leading 24,000 CFM of air conveyance. Using durable construction materials throughout this turbine system ensures low maintenance and long life. The automatic central bearing lubrication system further ensures reliability and reduces maintenance requirements when compared to a positive displacement (PD) blower vacuum system.

There really is no comparison when moving high volumes of dry excavated materials quickly and efficiently.



MATERIAL SEPARATION SYSTEM

The 3-stage material separation system with effective cyclone action allows for over 98% of the excavated materials to remain inside the side-tipping hopper. Materials remain dry and be reused immediately as backfill, or stored for later applications.

Container volumes range from 6yds³ (4.5m³), up to 15.7yds³ (12m³), depending on equipment requirements, with all configurations allowing for controlled offloading into 30 yard capacity roll off containers for segregated disposal when required.



HIGH-CAPACITY COMPRESSOR SYSTEM

An optimized onboard compressor system is critical to production during vacuum excavation. The vane-style compressor system delivers the highest levels of productivity and ensures quick and efficient ground disturbance before the vacuuming process. Depending on equipment requirements, digging conditions, and desired pressures and flow rates, the compressor system can be configured to ensure that the air excavation process is possible even in the toughest of ground conditions.

The added oiled air outlets in this system allow for auxiliary tooling such as pavement breakers and pneumatic shovels to be utilized as needed.



BUILT TO WORK.

FILTRATION SYSTEM

An advanced filtration system is required to facilitate the formidable air conveyance produced by the Dino Series suction excavators. Equipped with forty-two polyester high-performance washable filters, the air flow remains clean so that productivity isn't interrupted.

With over 1800ft² of total filter medium surface area, the vacuum process remains effective even in the most demanding, dry, dusty, or damp excavating conditions. Automatic reverse "Jet-Pulse" filter technology allows for continuous cleaning and keeps maintenance and changeovers to a minimum. Unlike the typical two stage cyclonic filter systems found in most common vacuum trucks, the MTS filtration system is engineered to manage dry materials day in, and day out.



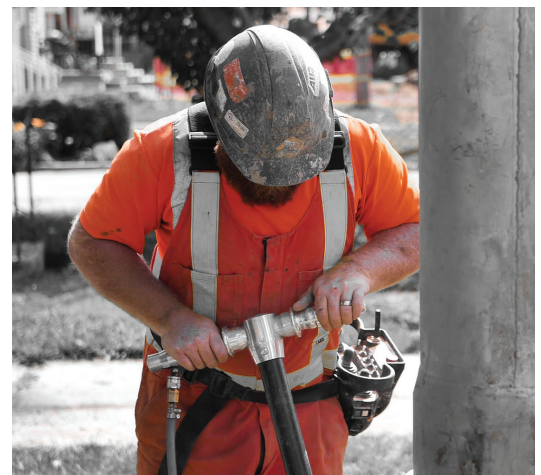
POWER ARM & SUCTION HOSE

Controlled via wireless pendant, the 5-point fully articulating Power Arm eliminates worker strain during positioning and any dry vacuuming operations. The 10" (250mm) diameter suction hose is also equipped with a pneumatic boom hose vibrator system, which eliminates potential clogging and build up of materials well before they can become a problem. The all clear "IKE" excavation system can also be utilized to excavate when allowable and helps expand on the versatility built into every Dino Series suction excavator.



ONBOARD TOOLS

Projects within the limits of utilities or buried infrastructure can encounter a variety of different materials which require more than one alternative for non-destructive excavation. The MTS Dino Series has a powerful onboard compressor system used to power a selection of lightweight pneumatic tools which can add versatility to any vacuum excavation project. All tools are equipped with quick-connect fittings and are ideal for switching between tasks while increasing overall productivity.



SPECIFICATIONS

AIR COMPRESSOR

Compressor Type	Rotary Vane
Flow / Pressure	360 cfm @ 185 psi
Buffer Tank Capacity	15 Gallon / 60L
Oiled Air Connection	1x Rear
Non-Oiled Air Connection	2x Rear

MEGA ARM

Mounting Location	Rear - 5 point articulating
Length	18' / 5.5m 26" / 7.9 m with extension
Swivel Radius	180°
Construction	Steel - Welded / Bolt
Powered	Yes
	Hydraulic
Remote Controlled	Yes
Suction Hose Diameter	10"
IKE ('All Clear' Excavations)	Rotating turntable dig tube attachment
	Continuous rotation or oscillation
	1x 60 inch IKE digging tube

TWIN FAN TECHNOLOGY

Type	MTS F 42,000
Power	315 HP / 235 kW
Max. Air Volume	24,000 CFM 42,000 m3/h
Max. Negative Air Pressure	13 Hg 44,000 Pa
Fan Drive	Split-shaft PTO with processor controlled clutch engagement
Fan Diameter	900 mm
"Fast-Cut" Shut Off/Down	Yes
MTS - FES Fuel Economy System	Yes
Fan Bearing Lubrication	Automatic - Central

STABILIZERS

Driver / Dump Side	2x
Passenger/Power Arm Side	1x
Operation / Type	Hydraulic

TOOLS AND ACCESSORIES

Air Spade	1x Air Spade 4000 Utility Series + 5' extension
	150 and 225 CFM Nozzles
Power Shovel	1x Vogt Pneumatic Shovel
	Tool Length - 5' / 1.5 M with 5.5" Spade
	Air Hose Length - 24'6" / 7.5 m
Jackhammer	One (1) - 20kg with Spade and Chisel
Safe Excavation Suction Tube	Light weight HDPE with Urethane end
Reducer/Daylighting	Yes - 6" diameter
Technical Tool Kit	In-field adjustments / repairs
Extension Tubes	6' Flexible
	4' Rigid
	45° suction tube adapter
Other	4x Double hook clamps

WIRELESS REMOTE CONTROL

Manufacturer	ABITRON
Controls	Boom and Tipping Operations
	Compressor On/Off
	Filter Cleaning On/Off
	Boom to Tip Switch
	Emergency Shutdown
	Motor Start/Stop, Reset
	Motor - 3 Stage Speed
	Hydrostatic Drive
Storage	Dedicated in-cab remote storage, with auditory proximity sensor alarm
Hydrostatic Drive	Operator remote control for drive, reverse, and steering functions
	Operate with suction on or off
	2.5 mph 4km/h max speed
	Front bumper sensor for auto-stopping

All North American MTS equipment is built to DIN Standards and certified by TUV.



* Features listed are subject to change.
* Features listed do not apply to all truck configurations.

HYDRAULIC SYSTEM

Hydraulic Circuit #1	Power Arm
Hydraulic Circuit #2	Air Compressor
NTZ Bypass Fine Filter	Yes
Return Filter	Yes - Replaceable Cartridge
Hydraulic Oil	HLP 46
Hydraulic Oil Tank	Steel, Powder coated
Temperature Sensor	Yes
Oil Level Indicator	Yes
Fluid Change Interval	500 hr service intervals after initial break in period.

FILTRATION

Number of Filters	42
Filter Style	Cone
Filter Material	Polyester - washable
HEPA compatible	Yes
Filtration Efficiency	T1-15; 90% @ 2.5 µm, > 98% @ 4 µm
Filter Cleaning System	MTS Material Deposition System (Patented) 3 Stage high-performance filter system, based cyclone, with electronically controlled auto cleaning (pulse-jet technology)

LIGHTING

Rotating Safety Beacon	Yes - Cab Mounted
Rear Flashing Safety Lights	Yes
12V Power Socket	1x - Rear
Optical Light Tower	Yes
Enhanced Safety Lighting	1x LED Light - Power Arm Shaft 2x LED Lights - Inside Toolbox 2x LED Lights - Middle Segment Power Arm 3x LED Lights - Positioned on Truck Frame

NOISE REDUCTION

Machine House	Anti-noise Foam Plates
Decibel Rating	≤ 85 dB @ 50 Ft (rear of unit)

VIBRATORS

Suction Hose	4x Pneumatic powered
Dumping Container	2x

STAINLESS STEEL CONTAINER

Capacity	4.5 yds ³ , 6 yds ³ , 10.5 yds ³ , 16 yds ³
Construction	Container & Inner Lid - Stainless Steel Wear Parts - ST 37/52 Hardox
# of Compartments	2x
Primary Compartment	Cyclone & Gravity Separation
Secondary (Filter) Compartment	Finer material from filter
Tip Direction	Side - Driver (City Dino - Rear Tip)
Tip Mechanism	Hydraulic
Tip Angle	45 degrees
Max Bin Height for Offloading	60"

HOSE REELS + HOSE

Rear Mount - Non-Oiled	1x
Hose Length	33' / 10 m
Auto Re-coil with brushes	Yes

PAINT (Excluding Chassis)

Pre-finish Surface Prep	Sandblasted
Multi-Layered	Yes
Paint Type	2K RAL Colors / custom colors available

STORAGE

Side Mounted Toolbox	Yes - Cab Mounted
Toolbox Lining	Rubber Mats
Toolbox Lift Mechanism	Gas Springs
Lockable Doors	Yes
Suction Tube Carrier	Yes - location model dependant

ADDITIONAL FEATURES

Lubrication	Twin Fan System Automatic Lubrication
Reverse Camera	180° view, In cab LCD monitor
Grounding Device	Retractable Reel System 33' (10 m) cable / pincer & earthing screw spike
Retractable Steel Ladder	Truck Mounted - allows for safe roof access
Decanting Valve	1x Decanting Valve 1x Decanting Filter Box
Mudflaps	Aluminum
Rear Bumper	Integrated Receiver

THE INDUSTRY ASKED. OX EQUIPMENT ANSWERED.

As North America continues to realize the benefits of safe digging equipment on projects that need to take sensitive infrastructure into consideration, they are also asking for vacuum excavation solutions that keep excavated materials dry.

There are many reasons why you want to keep your spoils dry, but probably the most significant reason is to avoid the increasing costs of disposing of wet slurry created by hydrovac excavation. In response to this, many hydrovac manufacturers are trying to repurpose their equipment to also dig dry, but at the end of the day, these are machines that only perform effectively when they can use water.

The MTS Dino Series was engineered from the very beginning to work and perform at powerful levels of productivity, utilizing the power of air conveyance to move dry materials at remarkable dig rates.

Although there are many in the marketplace coming forward in an attempt to solve the problems surrounding hydrovac, or water-based, excavation. The answer has been proven in countries around the world for over three decades, and is now here on US soil.

It was built to excel at digging dry, and it was engineered to deliver high performance numbers for as long as you have it working for you.

The MTS Series of advanced dry suction excavators isn't just the answer to the industry's problems, it has been the solution since day one.



EXCEEDING INDUSTRY DEMANDS

The MTS Dino Series continues to exceed industry demands due to its unrivaled productivity. The efficiencies created by this equipment consistently lower overall bottom-line costs, provide the highest levels of safety and factor in environmental impacts.



**Decreased
Project Costs**



**Unrivaled
Productivity**



**Environmentally
Responsible**



**Uncompromising
Safety**



PARTS | SERVICE | TRAINING & SUPPORT

Ox Equipment delivers hands-on training of the MTS Dino Series to give owners and operators the knowledge and skills required to gain a serious advantage in vacuum excavation.

Proper training equips operators with the necessary skills to navigate and control this powerful machinery confidently, reducing the risk of accidents and injuries. Moreover, well-trained operators exhibit increased productivity and efficiency, ensuring optimal utilization of this equipment which minimizes downtime.

A more skilled workforce will boost operational efficiencies and bolster the profitability of your projects.

We're prepared to keep you working.

Ox Equipment makes use of a state-of-the-art facility stocked with the necessary replacement and repair components that ensure the high productivity rates of the MTS Dino Series suction excavators. With MTS factory trained technicians that can diagnose and assess what your suction excavator needs to remain at optimal operating levels.





Ox Equipment is the exclusive North American partner for MTS GmbH Suction Systems. The combination of German engineered and manufactured equipment, bundled with 5 Star North American service, we offer a package that delivers complete peace of mind, allowing you to bring top-notch supplied service into your marketplace. Ox Equipment will optimize the performance of your suction excavation equipment through proactive fleet management services, based on expertise and innovation. The Ox Equipment factory-trained team is driven to get your business performing better than ever.



MTS GmbH has been manufacturing suction excavation equipment in Germany for over 20 years. Today there are thousands of suction systems being used in 35 different countries worldwide, and it is commonly referred to as the safest method of excavating around dense underground infrastructure. Combining their years of engineering excellence with safe and efficient work practices make the MTS Dino Series a world leader in the vacuum excavation industry.



MTS DINO SERIES

STOCK MODELS

CUSTOM MODELS



MTS **DINO4.5 LT**

MTS **DINO4.5**

MTS **DINO6**

MTS **DINO8**

MTS **DINO12**

Container Volume

6 yds³ (4.5 m³)

6 yds³ (4.5 m³)

8 yds³ (6 m³)

10.5 yds³ (8 m³)

16 yds³ (12 m³)

Material Separation System	●	●	●	●	●
24,000 CFM Twin Fan System	●	●	●	●	●
160 CFM @ 116 PSI Compressor	☒	☒	●	●	●
360 CFM @ 185 PSI Compressor	◆	◆	○	○	○
10" Diameter Suction Hose	●	●	●	●	●
Self-Cleaning Filtration System	●	●	●	●	●
Power Arm Hose Carrier	●	☒	●	●	●
Mega Arm Hose Carrier	☒	◆	○	○	○
Hydrostatic Ground Drive	☒	◆	○	○	○
Stainless Steel Hopper & Lid	◆	◆	○	○	○
All Clear IKE Excavation System	◆	◆	○	○	○
Full Container Design Panelling	◆	◆	○	○	○
Boom Hose Vibrator System	◆	◆	○	○	○
Container Vibrators	◆	◆	○	○	○
Side Tip/Dumping Capability	●	●	●	●	●
Hydraulic Stabilizers	●	●	●	●	●
Wireless & Tethered Remote	●	●	●	●	●
Air Exhaust/Sound Silencer	●	●	●	●	●
Suction Tube Storage	●	●	●	●	●
Tool Box	●	●	●	●	●

● Standard

○ Optional

◆ Installed Option

☒ Not Available

Contact Us:

Tel: (888) 290-4044

Email: info@ox-equipment.com

Web: ox-equipment.com

**PERFORMANCE.
DRIVEN.**

