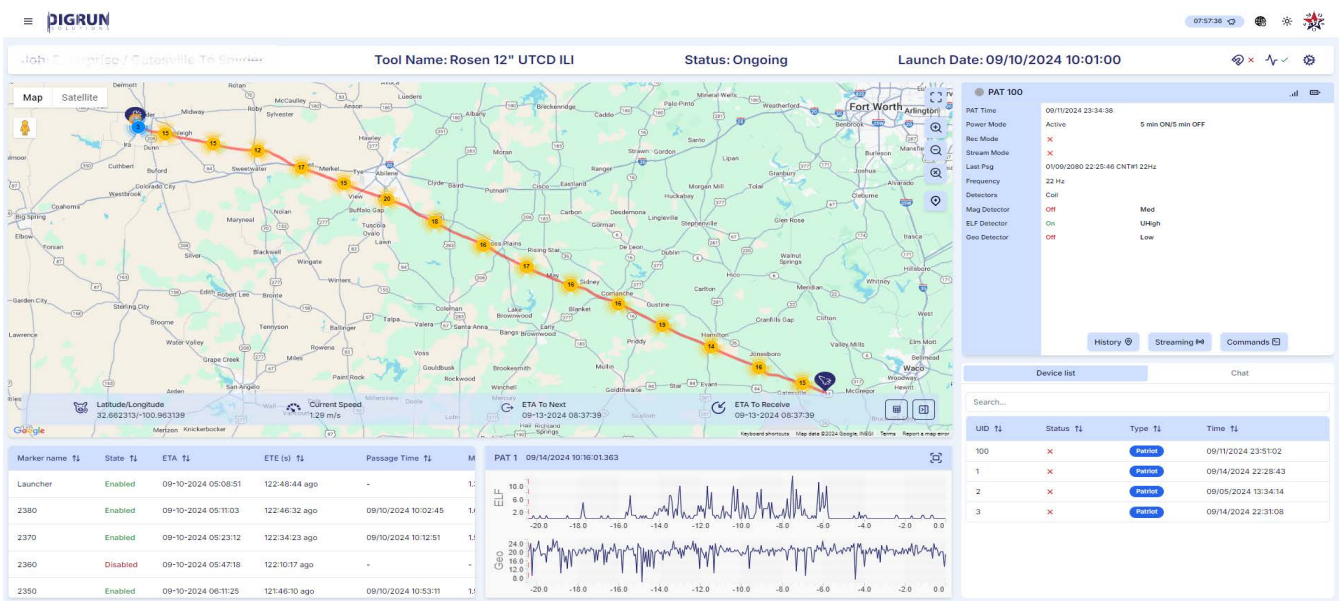


OVERVIEW

At PigRun Solutions, we continue to push the boundaries of pipeline pig-tracking technology with our Patriot AGM and PaTrack Dashboard. These solutions are designed to deliver industry-leading reliability, efficiency, and user experience. In this case study, we successfully tracked a 12-inch UTCD ILI tool equipped with a continuous transmitter.

The run commenced on September 10, 2024, at 10:00 AM and concluded on September 13, 2024, at 8:30 AM, covering over 200 miles of pipeline. Our technology was thoroughly tested under real-world conditions, further showcasing the performance and precision of both the Patriot AGM and the PaTrack Dashboard.



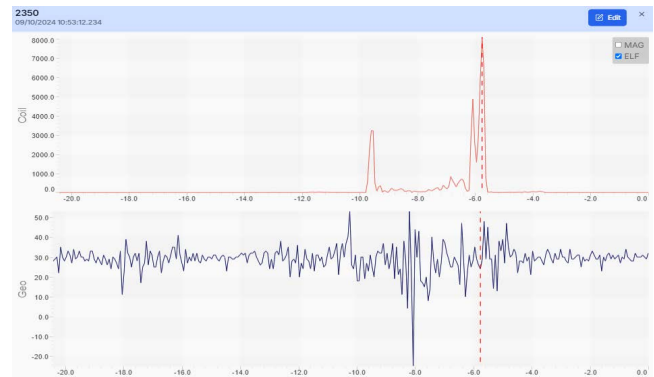
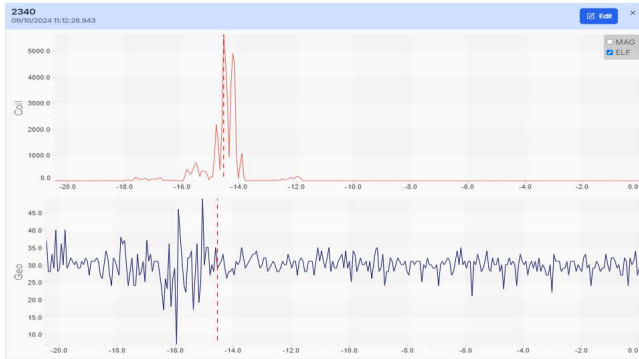
PROJECT SUMMARY

The run lasted for three days, during which two Patriot AGM boxes were carried and deployed by the tracker across multiple locations along the pipeline. The customer's primary goal was to record data onto the AGMs' SD cards and have us perform post-processing to demonstrate that the Patriot system could reliably detect their tool without any issues. Despite this being a passive run, with no dedicated resources for real-time monitoring or adjustments, the Patriots delivered outstanding results.

Strong cellular reception was available at most locations throughout the run, allowing us not only to record data on the SD cards but also to track the pig live using the PaTrack Dashboard. This demonstrated the versatility of our technology, proving its effectiveness in both active and passive tracking scenarios.

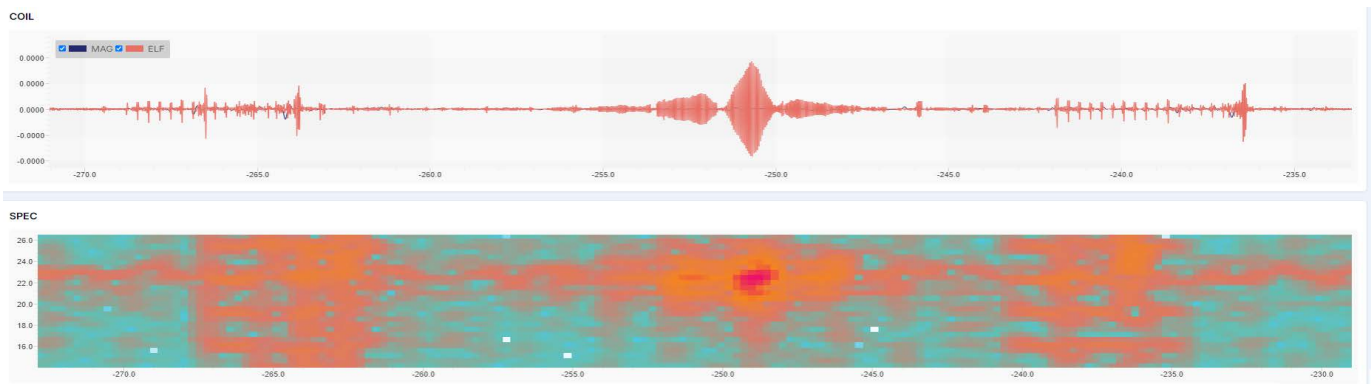
Performance and Detection

During the run, the Patriots autonomously detected and reported 98 pig passages directly to the PaTrack Dashboard. Following the retrieval of the boxes, we conducted post-run data analysis and identified an additional 22 passes that were not auto-detected by the Patriots. This suggests that with background noise analysis and minor adjustments to the settings at specific locations, the Patriot AGMs could have successfully captured these extra passes in real-time.



LIVE TRACKING AND FEEDBACK

The PaTrack Dashboard proved invaluable, enabling live tracking thanks to strong cellular signals. This feature allowed us to verify and validate the data remotely, providing confidence in the live tracking capabilities of our system. Customer feedback was positive, further reinforcing the value and performance of our solutions in real-world applications.



+1 514 466 2141



www.pigrun.ca
sales@pigrun.ca



4513 Ferguson
Dr, Brockville, ON K6T 1A

REPORTING

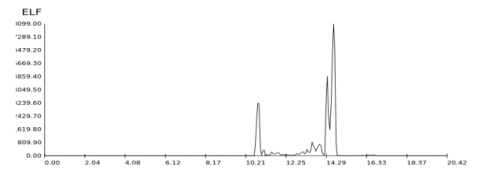
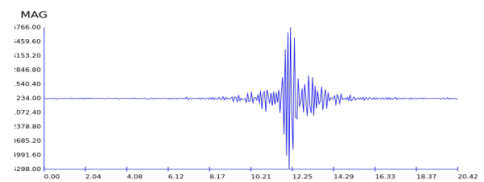
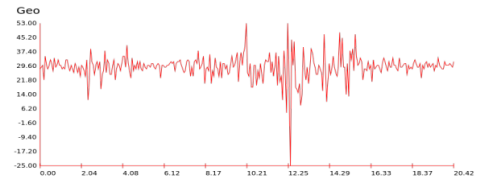
One of the standout features of the PaTrack Dashboard is its powerful reporting functionality, which allows users to generate comprehensive reports at the end of each run with the click of a button. Within seconds, the report provides a summary of the run, detailing key events, pig passages, and performance insights. The report is structured into several sections, including a high-level overview, a tracking sheet with data collected throughout the run, and a detailed breakdown for each marker location, capturing every pass and any relevant information added during the run.

Our reporting feature is continually evolving, and we work closely with our customers to provide custom reporting solutions tailored to their specific needs. Whether it's a standard report or a customized format, the PaTrack Dashboard ensures that users can easily access and share critical data with stakeholders. This feature has become one of the biggest assets for our clients, helping streamline their workflow and enhance decision-making. Looking ahead, we have ambitious plans to further enhance the reporting capabilities to meet the growing demands of our customers and the industry.



2350

Marker Name	2350
Lat/Lng	31.45704815 / -97.62951886
State	Enabled
Passage Time	09/10/2024 15:53:12
Passage Type	PAT
Box ID	3
Validator Name	Kelly McDonald
Validator Email	kelly@mcdonaldoilfieldoperations.com
Notes	Pipeline Marker



CONCLUSION

The results of this project clearly demonstrated that the Patriot AGM and Patack Dashboard are powerful tools for pipeline tracking. The success of this test marks a significant step toward broader adoption of this technology in the industry. The positive outcomes from this project underscore PigRun Solutions' commitment to delivering innovative, reliable, and user-friendly solutions that enhance the safety and efficiency of pipeline operations.



+1 514 466 2141



www.pigrun.ca
sales@pigrun.ca



4513 Ferguson
 Dr, Brockville, ON K6T 1A